



Regent  
College  
London



Focus on  
your future

PROSPECTUS

# Welcome

Welcome to Regent College London.

In today's rapidly changing global economic environment, having the right qualifications is more important than ever.

At Regent College London, we have been operating successfully for over 20 years, and are now in our tenth year of providing higher education courses.

We have built a reputation on well-qualified and experienced staff, small class sizes, and well-funded facilities. This allows our students to flourish and succeed – whether it is to build their careers or go on to further study.

We are dedicated to widening access to higher education for all prospective students and are recognised for our success in attracting applications from under-represented groups, those who are returning to education to gain new or higher level skills, and those with varying levels of past academic success.

We are able to work very effectively with students of all abilities to improve their prospects and carry them forward into achieving their academic aspirations, forge successful careers or start their own businesses.

We offer a range of fully accredited, industry-focused HND, foundation year routes, foundation degrees, bachelors degrees, top-up and masters courses that are designed with both professional and personal success in mind.

We pride ourselves on taking an individual approach to our students needs and on working hard to enable them to achieve their goals. Our flexible approach means we are always looking for ways to improve what we offer in terms of courses, student support and the Regent College London student experience.

As Principal of the College, I am responsible for setting and meeting our strategic objectives and for ensuring the quality of our student experience. I look forward to welcoming you to Regent College London in person very soon.



**Dr Selva Pankaj**

**Principal**

FRSA, FCMA, CGMA, MBA, Hon DLitt, Hon EdD

# Team



**Dr Selva Pankaj**

CEO, Principal, Chief Academic Officer  
and Accountable Officer



**Tharshiny Pankaj**

CEO and Academic Registrar



**Alka Tailor**

Chief Commercial Officer



**Paras Patel**

Chief Financial Officer



**David Donnarumma**

Provost



**Paul Williams**

Deputy Provost



**Will Naylor**

Director of Academic Governance



**Dr. Morris A. Anglin**

Head of School of Health and  
Sports Science



**Professor Ilias Oraifge**

Head of School of  
Engineering and Computing



**Rao M Kashif Khan**

Deputy Head of School of  
Business and Enterprise



**Caroline Walsh**

Deputy Provost and Leader of the School of  
Business and Enterprise



**Carol-Ann Maxworth**

Commercial Director



**Dr Qudoos Yousuf**

Head of Engineering



**Libby Pearson**

Director of Governance and  
Compliance, Secretary to Board of  
Directors



**Claire De Than**

Head of the School of Law  
and Social Sciences



**Maeve Murray**

Deputy Head of the School of Health  
and Sport Sciences



**Sam Reynolds**

Director of Student Experience and  
Operations



**Sasha Carter**

Director of Academic Quality



**Ayaz Kazi**

Director of Administration



**Aamena Hanif**

Head of Partnerships

# Why Regent College London?



## Morning, evening & weekend classes

Fit your studies around your life commitments



## Multiple Intake Dates

Flexibility to start your course when you wish



Overall Satisfaction score of 93% in the National Student Survey (NSS) 2022



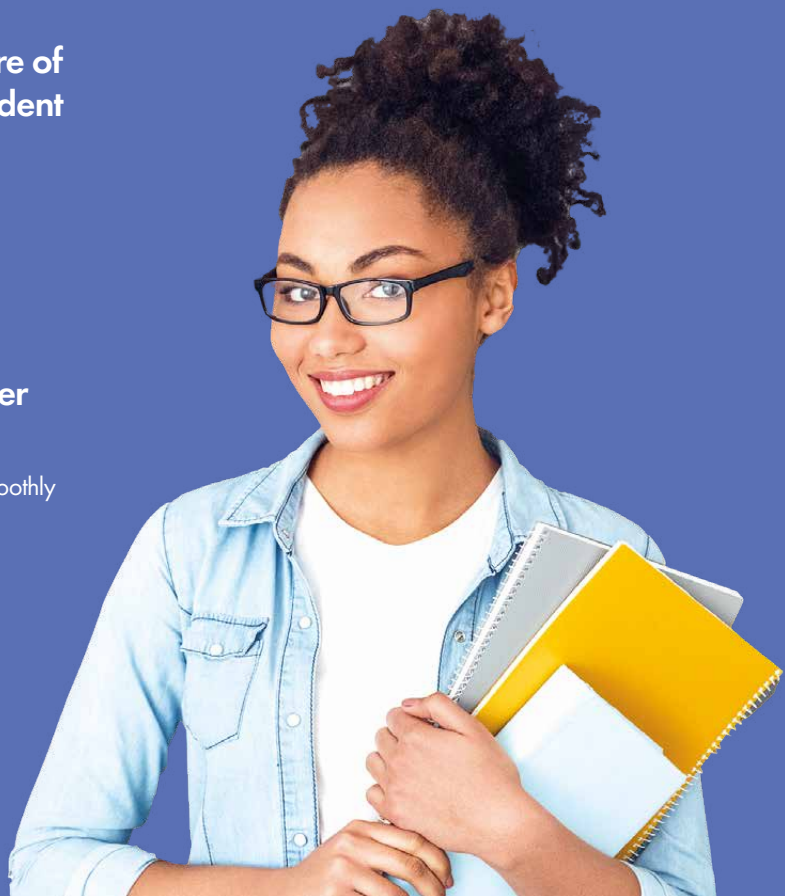
## Customer Support Officer

To assist you during your time at Regent



## Allocated Case Worker with Direct Contact

To help process your application smoothly





## Highly experienced academic faculty

Small class sizes



## Modern campus locations with excellent facilities



## Laptop Loan Scheme available to all students



## Progression opportunities



## 20 years

of education success



## Advice and support – student loans



Specialist character-building  
programme to prepare you  
for a successful career



# Course Delivery Methods

## DIGITAL IN-PERSON AND DIGITAL ONLINE

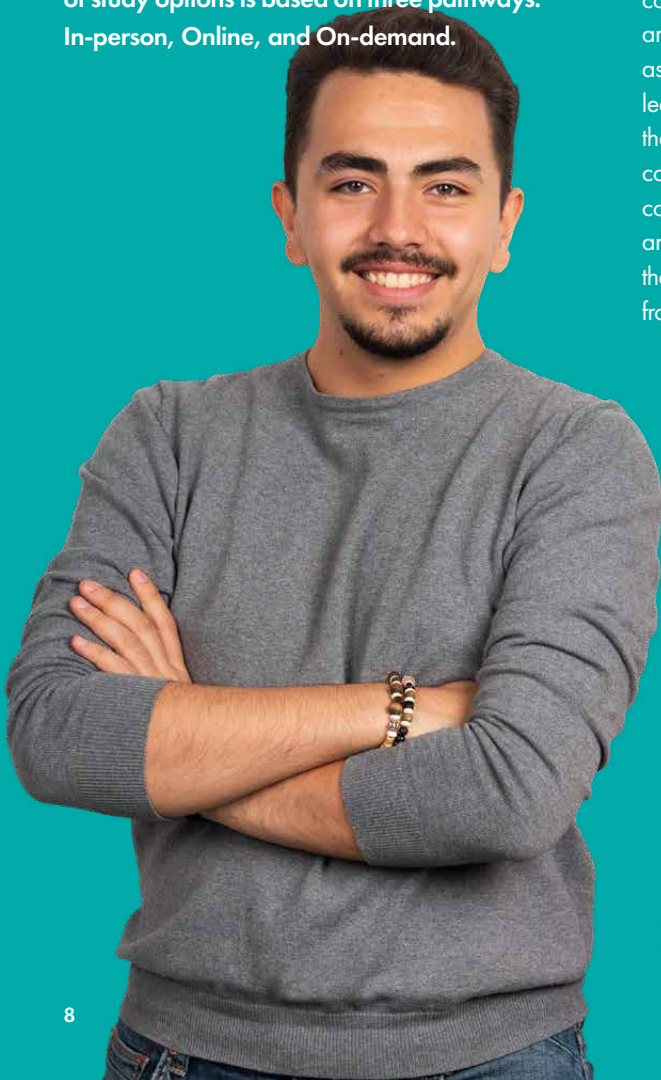
At Regent College London we are committed to delivering flexible courses that actively enhance your career prospects. We want studying with us to be an exciting and rewarding experience, which is why we've made every effort to ensure learning is tailored to your needs. Our package of study options is based on three pathways: In-person, Online, and On-demand.

## WHY STUDY IN-PERSON AT REGENT COLLEGE LONDON?

Learning in a classroom environment or within a small study group remains the preferred choice for many students who want that traditional university experience. With in-person study, the teacher and students are present at the same location and meet at a scheduled time. They use laptops and tablets to engage with the coursework, share information, and receive feedback on current assignments.

## RCL IS FOR STUDENTS OF ALL AGES AND BACKGROUNDS

All in-person teaching at Regent College London takes place at one of our modern and well-equipped campuses across the city. Each are thriving, diverse communities of passionate, dedicated individuals and are in areas that can benefit our students academically as well as socially. Ideal for encouraging a better learning experience, it is these types of communities that help our students to prosper and grow. With connections to local businesses, excellent transport connectivity, dedicated facilities, and on-site career and teaching support, we offer students everything they need, no matter where in the world they join us from.

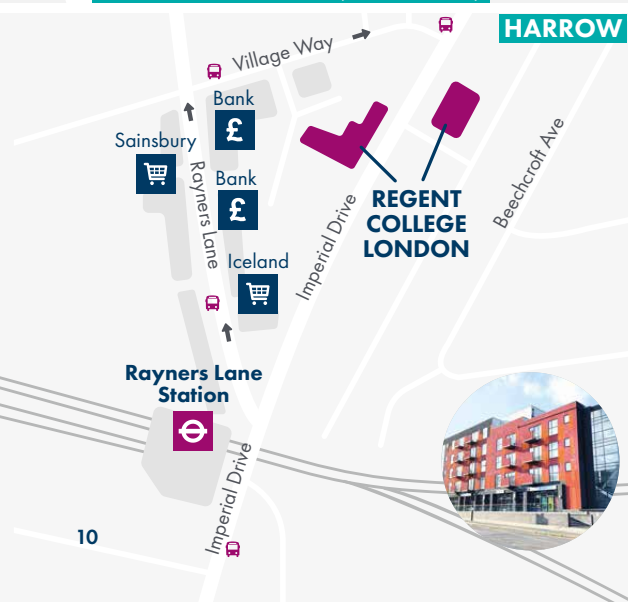




## CENTRAL LONDON (GREAT TITCHFIELD STREET)



## CENTRAL LONDON (HOLBORN)



# The Regent College London Campus

## Our Locations

### CENTRAL LONDON (GREAT TITCHFIELD STREET)

Our newest location is set in the heart of London at Great Titchfield Street. The facility has excellent transport links and is close to the heart of city life, including nearby restaurants and bars. The GTS campus boasts well-equipped classrooms, a student lounge, computer suites, free Wi-Fi, and private study areas.

<https://www.rcl.ac.uk/campuses/london-campus/>

**TUBE/TRAIN** **Great Portland Street Station**  
Metropolitan line,  
Hammersmith and City Line

**BUSES** 88, 453, C2, N18,  
18, 27, 30, 205

### CENTRAL LONDON (HOLBORN)

Our brand-new campus has a perfect locality, right on Princeton Street. There are fantastic facilities nearby, including a 2-minutes' walk underground station, and popular restaurants, cafés, and tourist attractions. The modern campus proudly boasts brand-new labs, innovative study spaces, and a common area to unwind in, as well as free Wi-Fi throughout.

<https://www.rcl.ac.uk/campuses/central-london-holborn/>

**TUBE/TRAIN** **Chancery Lane**  
Central Line

### HARROW

Our Harrow location boasts modern classrooms, labs, and state-of-the-art facilities designed for strong educational progression. Just a few minutes' walk from Rayners Lane tube station and with a host of local shops on its doorstep, the location is ideal for students who enjoy having everything close at hand.

<https://www.rcl.ac.uk/campuses/harrow-campus/>

**TUBE/TRAIN** **Rayners Lane Station**  
Metropolitan line, Piccadilly line

**BUSES** H9, H10, H11, H12, 398

## KINGSBURY

Our Kingsbury location is home to modern facilities within an incredibly vibrant area. The location provides an academically and socially engaging learning environment with a dedicated higher education student suite, lounge area, and IT lab.

<https://www.rcl.ac.uk/campuses/kingsbury-campus/>

**TUBE/TRAIN** Kingsbury Station  
Jubilee line

**BUSES** 83, 204, 324, 653, 683

## WEMBLEY

Our Wembley location is just a few minutes' walk away from Wembley Stadium, the Arena, and the London Designer Outlet. Located in a very sociable and diverse community, the college has strong connections with local businesses and organisations, including the library, the civic centre, and gym facilities, allowing students to expand their social and academic relationships.

<https://www.rcl.ac.uk/campuses/wembley-campus/>

**TUBE/TRAIN** Wembley Central Station  
Bakerloo line, Overground

**BUSES** 83, 223, 224, 92, 182, 79, 204, 18

## SOUTHALL

Our Southall location is in one of west London's most diverse areas, based in a thriving community full of street food stalls, music venues and local businesses. The Southall location is in the heart of the district, with easy access to transport links and local amenities. With cutting edge IT facilities and comprehensive study resources, it makes for an unforgettable study experience.

**TUBE/TRAIN** Southall Station  
National Rail

**BUSES** 95, 105, 120, 195, 207, 427, 607, E5, H32



## STEP INTO THE FUTURE WITH REGENT DIGITAL SERVICES

Regent Digital is an education ecosystem enabling transformative and adaptive learning for all students online and on-campus, providing the highest of standards for all students. Regent Digital Services makes the most of the latest advancements in technology and gives you, the students all the perks of attending your dream course!

Our flexible study timetables are created to suit almost every lifestyle, and you will have access to a high level quality of education whenever and wherever you want, as long as you have access to the internet; all at the tip of your fingers!

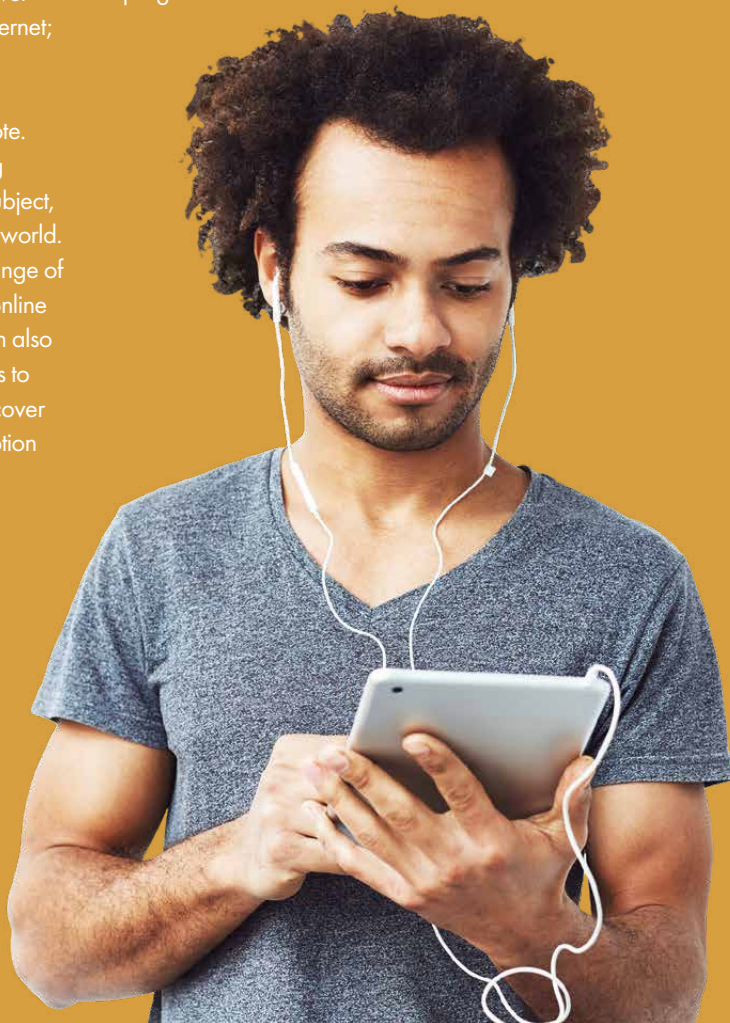
Embark on social distancing on a productive note. Regent Digital Services can be a useful learning method for sharpening your skills in a difficult subject, or learning a new skill in an increasingly digital world. In addition, you will have access to a diverse range of materials such as videos, photos, and eBooks online as well. Our highly experienced academics can also integrate other formats like forums or discussions to enhance your engagement in their lessons. Discover how it works and why it could be the perfect option for you!

## WHAT COURSES ARE OFFERED ON REGENT DIGITAL SERVICES?

Great news! We are offering all of the Regent College London Courses through Digital Learning.

## HOW WILL REGENT DIGITAL SERVICES WORK?

It's pretty simple and easy to use! We have 100% online resources, and now students can expect to study using a combination of cutting-edge technological resources with no need to travel to attend lectures, exams or in-person discussion sessions! They are accessible on Regent Digital Services via the internet on your mobile, PC, tablet or laptop. The academic team will determine the format for each individual course and will select delivery methods that are best suited to your course or program.



# Student Experience

We aim to create a stimulating and supportive learning environment that enables students to interact, share stories and support each other freely and cohesively. Drawing on our long experience of educational success and cultural diversity, our focus is on enhancing skills and developing knowledge that can help you achieve your personal and career aspirations.

Embracing students from all walks of life is a priority, which is why both our academic learning facilities and courses have been designed with our students in mind. We foster a student community that encourages employability through vocational-based courses and a non-traditional student experience.

## IDEAL LEARNING ENVIRONMENT

Our campuses are strategically located in the heart of thriving communities, in areas that can benefit our students academically as well as socially. Ideal for encouraging a better learning experience, it is these types of communities that help our students to prosper and grow. From connections with local businesses, dedicated facilities and on-site student career and teaching support, we offer students everything they need, no matter which part of the world they have come from.

We also ensure all students are supported on a digital scale so no matter where you are attending lectures, if support is what you require we have a range of communication channels for you to reach us.

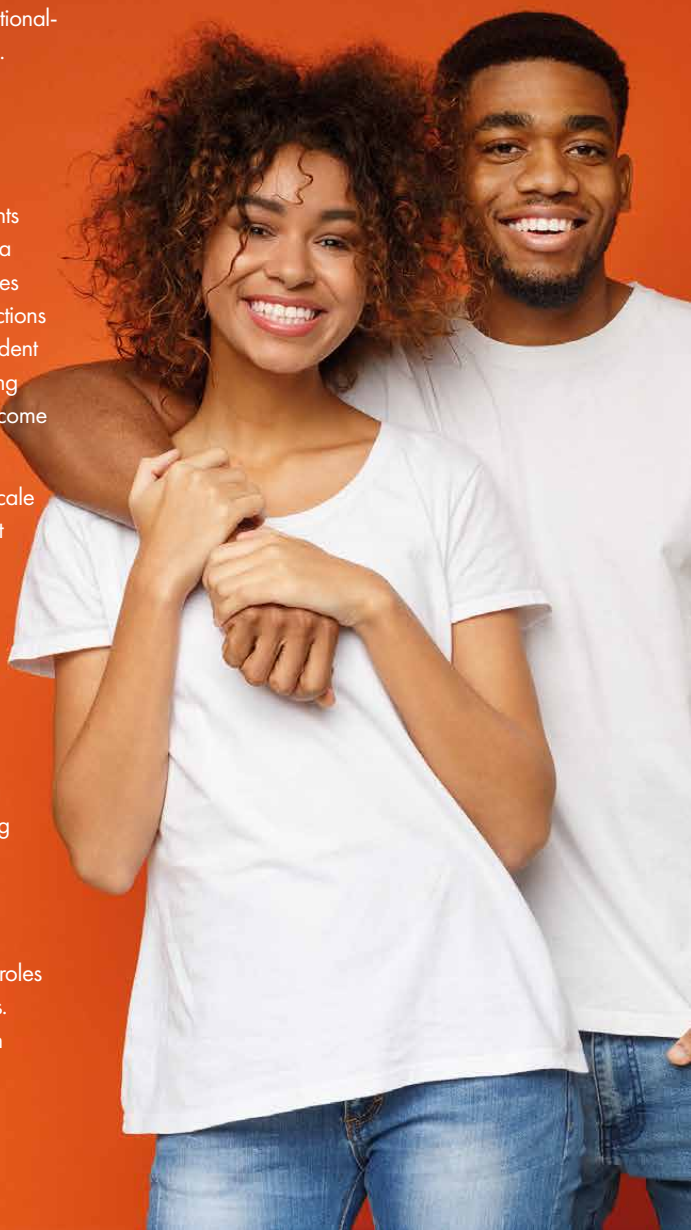
## STUDENT REPRESENTATIVES

Our student representatives (student reps) are volunteers who support our staff by championing the collective voice of students on all academic issues. From gathering opinions and providing constructive feedback, to helping keep students updated, the student rep is an accessible, convenient channel for ensuring your voice is heard.

We are undergoing a full review of our Student Representation structure to provide reps transparency in roles and responsibilities by introducing a variety of new roles. Our Student Reps will be voted through the new election process system.



**IF YOU ARE INTERESTED IN  
THE ROLE OF STUDENT REP,  
CONTACT OUR STUDENT  
REPRESENTATIVE TEAM  
WHO WOULD BE HAPPY  
TO ANSWER YOUR  
QUESTIONS.**



# Careers and Employability

## YOUR LEARNING

Our experienced lecturers have substantial real-life business knowledge, which is invaluable in coaching and mentoring students to further enhance their employability. Based on actual case studies and business issues, our courses are built on attributes valued by employers in the real world, such as communication skills, decision-making, teamwork and problem solving. This can equip you with the insights and capabilities you need to work in many different areas of business.



## OUR SUPPORT

We focus on delivering courses that can enhance your career prospects. From vocational courses to career opportunities with local businesses, your studies at Regent College London will have employability at their core. This includes a comprehensive range of support services, including a dedicated careers officer, pastoral support, careers advice and tailored job search assistance, all designed to equip you with the necessary skills and knowledge to meet your career or higher education aspirations. The inability to put new ideas into practice is called the knowing-doing gap. We teach you how to bridge this gap to enable you to put your dreams into action.

## ENHANCING OPPORTUNITIES

By focusing on the skills most valued by employers, our courses enable you to:

- Develop key business knowledge and skillsets
- Train for specific in-demand job opportunities
- Enhance your career prospects
- Progress to a higher qualification



# The Student Voice



## NSS (THE NATIONAL STUDENT SURVEY 2022)

The National Student Survey (NSS) 2022, carried out by Texunatech on behalf of the Office for Students, surveyed some 4.5 million students in the UK about their experiences in higher education. Respondents were asked for their views on a wide range of aspects during their studies including the level of teaching received, learning opportunities and resources, academic support, the university community, and available representation.

Regent College London achieved an Overall Satisfaction score of some 93%, placing the College in the top tier of higher education providers surveyed. We also exceeded the sector-wide score across all topics surveyed.

The Office for Students is an independent regulator of higher education in England. Visit its website for more information on its work to ensure students succeed and have a fulfilling experience of higher education in the UK.

We can only do this through continuous, honest and transparent feedback. Combing qualitative input from students with our creative aspirations, we hope to excel in becoming the recommended educational institute for operational excellence and student support in London. Our student voice and engagement encompasses our pedagogy & quality development and enhancement.

Our student voice and engagement encompasses our pedagogy & quality development and enhancement.



# Student Services

Student Services is a priority at Regent College London. It is established to be the 'One Stop Shop' for all current students during their academic journey. We deliver centralised services directly to all our current students, be it just general advice and guidance, or confidential discussions around health, wellbeing and personal circumstances.

## STUDENT SERVICES PROVIDES THE FOLLOWING SERVICES:



### Personal support

if you are experiencing relationship, family issues or domestic difficulties.



### Academic advice

on transfers, resuming studies, withdrawn or suspended from studies including advice on the financial implications of this.



### Student benefits

advice on discounts such as NUS/Totum Cards, travel discounts, advice on accommodation. Guidance on Student Finance and support to complete your application.



### External support

liaising with external organisations on the students' behalf, such as Student Finance England for direction with Student Disability Allowance, Child Care Allowance etc.



### Special interest

providing specialised support to students with learning difficulties such as dyslexia or dyspraxia through our external special needs provider Randstad.



### Personal support plans

providing support with Individual Assignment Submission Arrangement in the case of extenuating circumstances, Individual Maternity Support Plans, Individual Support Plans for students with mental health issues etc.



### Confidential support

for students with a disability or a condition that affects their studies.



### Advice

on non-academic and pastoral issues.



### Mental health support

through our mobile app Mind Connect  
- Students will have immediate access to bespoke, mental health support information and helplines whenever they need in times of difficulties.



### Student Committee

student representatives' meetings where all the issues raised by students are discussed; 'you said we did' poster published to reflect actions taken.

# Thinking into Character (TiC)

Thinking into Character (TiC) is a suite of transformational learning programmes. They are designed to aid your personal growth and accelerate your professional success. Whether you know it yet, you have the potential to improve your results exponentially, whether that is by completing a degree, getting a promotion, starting a business or enjoying more fulfilling personal relationships. These programmes will show you how these leaps in success are possible. Are you ready to make the leap?

Led by Dr Selva Pankaj, Principal, Regent College London and trained facilitators, the programmes are unique to Regent College London and are delivered digitally. They are based on indepth, pioneering research into the science and methodology of personal achievement, and includes insights from many inspirational entrepreneurs and leaders from across the globe. Students will also receive a TiC e-book.

## OUR TRANSFORMATIONAL LEARNING PROGRAMMES



### Thinking into Character Digital Platform

This programme is specifically designed to enable participants to build happy, successful lives and to achieve all of their goals and dreams, both educational or professional and personal.



### The Power of Learning from DAD Digital Platform

The programme will teach you how, using the resources you currently have, you can create the habits and mind-set required for lasting success, happiness and self-fulfilment.



## Think and Grow Rich Digital Platform

This programme will present you with a concentrated version of Napoleon Hill's insights. Each of Hill's 13 principles for success creation will be summarised, from having a burning desire and preparing an organised plan, to cultivating your sixth sense.



# Benefits

Learn how to identify, set and achieve inspiring goals

---

Improve your self-image and re-write your life script

---

Close the gap between your intentions and your actions

---

Understand how to turn non-productive habits into productive habits

---

Overcome challenges and barriers to success

---

Develop your leadership qualities

---

Completing the programme will not only help to transform your personal development, it will allow you to super-charge your personal and academic goals, equipping you with the knowledge and tools to achieve unprecedented success in your life.

# Academic Partnerships



London Academic Centre

## UNIVERSITY OF BOLTON

University of Bolton's number one mission is to be a distinctive "Teaching Intensive and Research Informed" university that puts student experience and education first, supported by the quality of our staff, our facilities and our links to employment sectors. Regent College London is proud to oversee all teaching, learning and student experience at University of Bolton Academic Centre London. The University of Bolton is a modern university with a distinguished history and has a long and proud heritage that goes back to 1825.



BUCKINGHAMSHIRE  
NEW UNIVERSITY  
EST. 1891

## BUCKINGHAMSHIRE NEW UNIVERSITY

Buckinghamshire New University is a long-standing established university with history dating back to 1891. An established educational institution for over 125 years it is renowned for innovation, teaching and student excellence. They are ranked as a top 20 UK University for student experience and teaching quality (NSS 2018), and in 2018 Bucks received a TEF Silver Award in recognition of their teaching excellence. They were proud to see Bucks ranked 16th in the UK for teaching quality (out of 130 institutions) in the 2018 Good University Guide.



St Mary's  
University  
Twickenham  
London

## ST MARY'S UNIVERSITY

Established in 1850, St Mary's University is a welcoming academic community, with a long and distinguished history in higher education. The University is committed to the highest standards in teaching across the wide range of undergraduate and postgraduate courses it offers and welcomes around 5,500 undergraduate and postgraduate from around the world to its campus in Strawberry Hill, London.

St Mary's is in the top ten nationally for teaching quality and the top five for student experience (Good University Guide 2022) and recently retained its Ofsted Outstanding Rating, which it has held for over ten years. The University is proud of its employability rates, with 96% of graduates from St Mary's in employment, vocation or further study within 15 months (HESA 2021).

# External Evaluations and Achievements

Regent College London delivers high quality teaching, learning and outcomes for students. We consistently exceed rigorous national quality requirements for UK higher education.



## QUALITY ASSURANCE AGENCY (QAA)

QAA works to safeguard quality and standards in UK universities and colleges, so that students have the best possible learning experience. QAA reports highlight good practice and contain recommendations to help improve quality.

Regent College London underwent a review by the QAA in September 2016 and received a commendable outcome from its 2017 monitoring visit. An annual return visit in September 2018 confirmed that we are continuing to maintain academic standards and enhance the quality of, and information about, student learning opportunities.



Regent College London is inspected by Pearson twice per year, once via an Academic Management Review (AMR), and once via a Standards Verification process. Our most recent AMR took place in August 2022.

There were no essential actions or recommendations made.

Our External Examiner visit was held in June 2022.



## NSS (THE NATIONAL STUDENT SURVEY 2022)

Regent College London achieved an Overall Satisfaction score of some 93%, placing the College in the top tier of higher education providers surveyed. We also exceeded the sector-wide score across all topics surveyed.



## UK Visas and Immigration UK VISAS

Regent College London is a UKVI Licensed Student Sponsor which means it can sponsor international students who wish to enter the UK for educational reasons.



## OFFICE FOR STUDENTS (OFS)

The Office for Students is the independent regulator of higher education in England and was established by the Higher Education and Research Act 2017. Regent College London is registered with OfS as a provider which can access public grant funding and consider applications for degree awarding powers.

# International Students

## WHY STUDY IN LONDON?

Studying in London provides students with a very unique experience. The City of London offers an atmosphere like no other, with vibrant communities, incredible shopping districts and mouth watering restaurants, London is truly the place to study. The cosmopolitan city leads in many industries including a leading Financial Centre in Canary Wharf, a thriving Business district based in the Centre of London and of course, superior Law Firms in Chancery Lane. London attracts the very best businesses with its breath-taking architecture and deep history.

London really is the place to study and is guaranteed to offer students a great, life-changing experience. Not only does the City offer diverse communities in every aspect of London, it is also encapsulated with museums, libraries and theatres, all of which add to a student's social life!

## WE ARE HERE TO HELP YOU EVERY STEP OF THE WAY

Here at Regent College London we understand that coming to a new country can be a challenge, we are there to help you every step of the way from things such as completing a course application, helping you find accommodation, to even opening bank account etc.

We are here to ensure that you receive a high quality education, without any doubts or concerns. We understand that it is not only our responsibility to teach our international students, but it is also our responsibility to ensure that there is someone to turn to in the College should they need advice or assistance on any matter.

We have many years of experience of receiving international students and are well versed in dealing with the problems that students experience when adjusting to a life in the United Kingdom and supporting them through their period of adjustment.

Therefore, we will assist students in such matters as:

- Planning travel arrangements to the United Kingdom
- Ensuring students are enrolled on an appropriate course
- Setting up bank accounts
- Registering with the Health Service



# SCHOOL OF BUSINESS AND ENTERPRISE

The School of Business and Enterprise allows students to take advantage of a broad range of Business related subjects. Each course is formulated with a range of modules to help target many different corners of the global business industry. Students who chose to enrol into any of our courses are exposed to many different Business and Enterprise disciplines such as Marketing, Business Management, Business Entrepreneurship and Accountancy. Whether you're looking to kick start your career in Business or reach new heights in your career, Regent College London are on hand to help take you there.



# HND in BUSINESS

## Higher National Diploma



Gain the specialist industry-specific knowledge and the real-world practical skills that top organisations are looking for with an Edexcel **Higher National Diploma (HND) in Business**.

### Why Regent College London?

- Personalised attention from experienced academics and friendly staff
- Advice and support on your SLC loan application
- Flexible timetables; day and evening classes
- Modern campus with multiple lecture rooms, a library and computer suites
- Field trips, guest lecturers and industry led presentations
- In-house career advice, and one to one support including CV writing and interview techniques
- At Regent College London all our students have allocated named support from an Academic and a dedicated Customer Support officer throughout their student journey

### Why should I do a HND in Business?

- Globally recognised qualification
- Ideal platform to move straight into employment, or on to undergraduate studies or a professional course
- Gain direct entry\* into the 3rd year of a bachelor's degree at university

### 7 pathways:

- ✓ Business General
  - ✓ Accounting and Finance
  - ✓ Business Management
  - ✓ Entrepreneurship and Small Business Management
  - ✓ Human Resource Management
  - ✓ Marketing
  - ✓ Operations Management
- Funding opportunities available subject to assessment by Student Finance England
- \* Subject to entry requirements

### Entry Requirements

- Minimum age of **18 years**
- **4 GCSE passes** (including English and Maths)
- **A Level achievement** ('A' to 'E' grade) that demonstrates strong performance in a relevant subject.

Note: equivalent qualifications are acceptable.

Or: a BTEC Level 3 qualification in Business or another related Level 3 qualification

Or: an Access to Higher Education Certificate received from an approved further education institution

All EU applicants are required to hold an accepted English language B2 (CEFR) qualification at a standard commensurate with IELTS 5.5 (with no less than 5.5 in reading and writing) or equivalent.

As part of our entry requirements, applicants who may not have the necessary qualifications, may be considered through their relevant work experience (2 years minimum). As part of the application process, applicants will be required to provide a copy of their CV and a reference letter from employers.

### Course Specification

Duration:	2 years
Level:	RQF Level 5
Awarding Body:	Pearson
Delivery:	Full Time
Intake dates:	September, January, April
Fee:	£9,250 per year (Home fee)





# BSc (HONS) BUSINESS MANAGEMENT

with Foundation Year

## Regent Means Business

Every organisation needs effective management. The **BSc (Hons) Business Management with Foundation Year** will help you develop a career with global possibilities.

You'll be exposed to key concepts in areas such as people management, business law, marketing, strategic management, information systems and big data, project management, finance and innovation and enterprise.

Plus, on completion of the course you'll receive the CMI Level 5 Diploma in Leadership and Management (subject to approval), giving you an impressive dual-award.

## Business Management Specialisms

As well as the BSc (Hons) Business Management with Foundation Year, we offer several specialisms or pathways that you can apply for:

- ✓ People Management
- ✓ Supply Chain
- ✓ Finance
- ✓ Marketing
- ✓ Retail

## Why do a Business Management degree?

Business management qualifications open doors, they are essential whether you are looking to pursue a career in business, start your own business, or achieve further success with your current employer or career.

Developing your employability is a key focus, the course is designed to help you to understand the business environment in local, national and international contexts.

You'll also develop sought-after skills in communication, data analysis, team working and problem solving.

## Why Regent College London?

- ✓ Highly knowledgeable, experienced lecturers who will ensure you get the help and advice you need to succeed
- ✓ Guest speakers from industry and business, enabling you to benefit from their knowledge, advice and guidance
- ✓ Flexible study options that allow you to fit your study around your personal and / or professional commitments
- ✓ Small classes which ensure that you'll receive the full attention and support of our exceptional teaching team
- ✓ A central location offering excellent teaching and learning facilities in the heart of London's west-end
- ✓ At Regent College London all our students have allocated named support from an Academic and a dedicated Customer Support officer throughout their student journey

# BSc (HONS) BUSINESS MANAGEMENT

## with Foundation Year

### Progression Opportunities

Our BSc (Hons) Business Management course is designed to provide a broad understanding of business functions within the business and commercial world.

You'll also have the opportunity to transfer to individual pathways in specific areas of business if you wish.

The course offers you a route into general management as well as specialist areas, such as business accounting and finance, enterprise, human resource management, business law, marketing, retail or supply chain management.

In addition to nurturing academic and sector specific knowledge, the programme aims to support your development of key employability skills, such as critical thinking, problem solving and data analysis.

Overall, the course aims to give you an essential appreciation of the skills needed to thrive and adapt in the changing world of work.

### What can I do with this qualification?

Graduates with specialist knowledge underpinned by a broader understanding of how businesses and managers operate have a competitive advantage when entering employment or self-employment.

This course will equip you to enter a range of business roles in the public, private and voluntary sectors.

Some graduates may choose to undertake further study in subjects such as marketing, finance, human resources, computing and international business management in order to develop their expertise in a particular area of business. Studying for an MBA is also another option.

### Entry Requirements

**UCAS points:** 48

**Level 3:** Any subjects are acceptable

**GCSEs:** Five at grade C or above / grade 4 to 9

**IELTS:** 5.0 with no less than 4.5 in any band (non-native speakers)

If you didn't study GCSEs / A-Levels and have non-traditional entry qualifications or relevant work experience we will be happy to consider your application. You'll be required to attend an interview as part of the admissions process.

### Course Specification

<b>Duration:</b>	4 years
<b>Level:</b>	RQF Level 3-6
<b>Awarding Body:</b>	University of Bolton
<b>Assessment:</b>	Exams, essays, reports and presentations
<b>Delivery:</b>	Full Time
<b>Timetable:</b>	Week Days / Evenings / Weekends
<b>Intake dates:</b>	September, January, April
<b>Fee:</b>	£9,250 per year (Home fee)

Delivered in partnership with:



London Academic Centre



Regent  
College  
London

# BSc (HONS) BUSINESS MANAGEMENT

Bachelor's Degree



## Regent Means Business

Every organisation needs effective and skilled management. The **BSc (Hons) Business Management** offers you the opportunity to develop a career with global possibilities.

On the course, you'll be exposed to key concepts in areas such as people management, business law, marketing, strategic management, information systems and big data, project management, finance and innovation and enterprise.

Plus, on completion of the course you'll receive the CMI Level 5 Diploma in Leadership and Management (subject to approval), giving you an impressive dual-award.

## Business Management Specialisms

As well as the BSc (Hons) in Business Management, we offer several specialisms or pathways that you can apply for:

- ✓ People Management
- ✓ Supply Chain
- ✓ Finance
- ✓ Marketing
- ✓ Retail

## Why do a Business Management degree?

Business management qualifications open doors, they are essential whether you are looking to pursue a career in business, start your own business, or achieve further success with your current employer or career.

Developing your employability is a key focus, the course is designed to help you to understand the business environment in local, national and international contexts.

You'll also develop sought-after skills in communication, data analysis, team working and problem solving.

## Why Regent College London?

- ✓ Highly knowledgeable, experienced lecturers who will ensure you get the help and advice you need to succeed
- ✓ Guest speakers from industry and business, enabling you to benefit from their knowledge, advice and guidance
- ✓ Flexible study options that allow you to fit your study around your personal and / or professional commitments
- ✓ Small classes which ensure that you'll receive the full attention and support of our exceptional teaching team
- ✓ A central location offering excellent teaching and learning facilities in the heart of London's west-end
- ✓ At Regent College London all our students have allocated named support from an Academic and a dedicated Customer Support officer throughout their student journey

# BSc (HONS) BUSINESS MANAGEMENT

## Bachelor's Degree



### Progression Opportunities

Our BSc (Hons) Business Management course is designed to provide a broad understanding of business functions within the business and commercial world.

You'll also have the opportunity to transfer to individual pathways in specific areas of business if you wish.

The course offers you a route into general management as well as specialist areas, such as business accounting and finance, enterprise, human resource management, business law, marketing, retail or supply chain management.

In addition to nurturing academic and sector specific knowledge, the programme aims to support your development of key employability skills, such as critical thinking, problem solving and data analysis.

Overall, the course aims to give you an essential appreciation of the skills needed to thrive and adapt in the changing world of work.

### What can I do with this qualification?

Graduates with specialist knowledge underpinned by a broader understanding of how businesses and managers operate have a competitive advantage when entering employment or self-employment.

This course will equip you to enter a range of business roles in the public, private and voluntary sectors.

Some graduates may choose to undertake further study in subjects such as marketing, finance, human resources, computing and international business management in order to develop their expertise in a particular area of business. Studying for an MBA is also another option.

### Entry Requirements

**UCAS points:** 104

**Level 3:** Any subjects are acceptable

**GCSEs:** Five at grade C or above / grade 4 to 9

**IELTS:** 6.0 with no less than 5.5 in any band (non-native speakers)

If you are an international student, you must take a Secure English Language Test (SELT). You can only take a SELT with one of the following providers: IELTS SELT Consortium including UKVI Academic IELTS, LanguageCert, Pearson and PSI Services (UK) Ltd.

If you didn't study GCSEs / A-Levels and have non-traditional entry qualifications or relevant work experience we will be happy to consider your application. You'll be required to attend an interview as part of the admissions process.

If you don't meet the entry requirements for this course, please consider applying for our **BSc (Hons) Business Management with Foundation Year**.

### Course Specification

<b>Duration:</b>	<b>3 years</b>
<b>Level:</b>	<b>RQF Level 4-6</b>
<b>Awarding Body:</b>	<b>University of Bolton</b>
<b>Assessment:</b>	<b>Exams, essays, reports, and presentations</b>
<b>Delivery:</b>	<b>Full Time</b>
<b>Timetable:</b>	<b>Week Days / Evenings / Weekends</b>
<b>Intake dates:</b>	<b>September, January, April</b>
<b>Fee:</b>	<b>£9,250 per year (Home fee) £13,550 per year (Overseas fee)</b>

Delivered in partnership with:



London Academic Centre



# BSc (HONS) BUSINESS MANAGEMENT

Top-Up Degree

## Regent Means Business

Every organisation needs effective and skilled management. The **BSc (Hons) Business Management Top-up** offers graduates the opportunity to develop a career with global possibilities in a broad range of areas.

On the course, you'll be exposed to key concepts in areas such as people management, business law, marketing, strategic management, information systems and big data, project management, finance and innovation and enterprise.

Plus, on successful completion, you'll also receive a CMI Level 5 Award in Leadership and Management (subject to approval), giving you an impressive dual-award.

## Business Management Specialisms

As well as the Business Management top-up, we offer several specialisms or pathways that you can apply for:

- ✓ Finance
- ✓ Marketing
- ✓ People Management
- ✓ Retail

## Why do a Business Management Degree?

Business management qualifications open doors and are considered essential whether you are looking to pursue a career in business, or advance in your current career.

The course is designed to help you to understand the business environment and the needs of employers in local, national and international contexts.

We'll support you to develop highly sought-after skills such as communication, data analysis, time management, team working and problem solving.

## Why Regent College London?

- ✓ Highly knowledgeable, experienced lecturers who will ensure you get the help and advice you need to succeed
- ✓ Guest speakers from industry and business, enabling you to benefit from their knowledge, advice and guidance
- ✓ Flexible study options that allow you to fit your study around your personal and / or professional commitments
- ✓ Small classes which ensure that you'll receive the full attention and support of our exceptional teaching team
- ✓ A central location offering excellent teaching and learning facilities in the heart of London's west-end
- ✓ At Regent College London all our students have allocated named support from an Academic and a dedicated Customer Support officer throughout their student journey

# BSc (HONS) BUSINESS MANAGEMENT

## Top-Up Degree



Regent  
College  
London

### Progression Opportunities

Our BSc (Hons) Business Management Top-Up course is designed to provide a broad understanding of business functions within the business and commercial world.

You'll also have the opportunity to transfer to individual pathways in specific areas of business if you wish.

The course offers you a route into general management as well as specialist areas, such as business accounting and finance, enterprise, human resource management, business law, marketing, retail or supply chain management.

In addition to nurturing academic and sector specific knowledge, the programme aims to support your development of key employability skills, such as critical thinking, problem solving and data analysis.

Overall, the course aims to give you an essential appreciation of the skills needed to thrive and adapt in the changing world of work.

### What can I do with this qualification?

Graduates with specialist knowledge underpinned by a broader understanding of how businesses and managers operate have a competitive advantage when entering employment or self-employment.

This course will equip you to enter a range of business roles in the public, private and voluntary sectors.

Some graduates may choose to undertake further study in subjects such as marketing, finance, human resources, computing and international business management in order to develop their expertise in a particular area of business. Studying for an MBA is also another option.

### Entry Requirements

You'll have successfully completed a Foundation Degree in Business Management, or another relevant qualification with 120 credits at HE4 and 120 credits at HE5, such as a Higher National Diploma (HND) or Diploma of Higher Education (DipHE).

If English isn't your first language you'll also need IELTS 6.0 with no less than 5.5 in any band (or equivalent).

If you have non-traditional entry qualifications or relevant work experience we will be happy to consider your application. You'll be required to attend an interview as part of the admissions process.

### Course Specification

Duration:	1 year
Level:	RQF Level 6
Awarding Body:	University of Bolton
Assessment:	Exams, essays, reports and presentations
Delivery:	Full Time
Timetable:	Week Days / Evenings / Weekends
Intake dates:	September, January, April
Fee:	£9,250 per year (Home fee)

Delivered in partnership with:



Teaching Intensive, Research Informed  
London Academic Centre

# MASTER OF BUSINESS ADMINISTRATION (MBA)

Master's Degree



The **Master of Business Administration (MBA)** course offers the opportunity to develop your critical knowledge of organisations, awareness of management and leadership practices and the complex business issues they face. You will also be able to develop creative and systematic approaches to underlying business issues, and understanding how business and management practices can be improved. Being intellectually stimulating and challenging, the course opens up career development opportunities as well as the opportunity to enhance analytical and critical competencies that are highly valued by employers in today's global economy.

## Why should I complete the Master of Business Administration (MBA) Degree?

The Master of Business Administration (MBA) is a great qualification to acquire, as it will take your employability to global fronts. Successful completion of the MBA will provide you with necessary business skills and knowledge needed for roles in various industries. Companies across industries seek business professionals with an MBA and it can create opportunities for promotion or a career change. The universal appeal of this qualification enables you to pursue a global business career.

## Why Regent College London?

- ✓ Highly knowledgeable, experienced lecturers who will ensure you get the help and advice you need to succeed
- ✓ Guest speakers from industry and business, enabling you to benefit from their knowledge, advice and guidance
- ✓ Flexible study options that allow you to fit your study around your personal and / or professional commitments
- ✓ Small classes which ensure that you'll receive the full attention and support of our exceptional teaching team
- ✓ A central location offering excellent teaching and learning facilities in the heart of London's west-end
- ✓ At Regent College London all our students have allocated named support from an Academic and a dedicated Customer Support officer throughout their student journey

## Modules

The modules listed below may be a mixture of compulsory and optional.

- ✓ Leadership and Management (MBA7058) - Core
- ✓ Marketing and Operations (MBA7059) – Core
- ✓ Financial Management and Decision Making (MBA7060) - Core
- ✓ Strategy (MBA7061) – Core
- ✓ Organisational Behaviour (MBA7062) – Optional
- ✓ Strategic HRM (MBA7063) – Optional
- ✓ Digital Business and Data Analytics (MBA7064) – Optional
- ✓ Business Ethics, Sustainability and CSR (MBA7065) – Optional
- ✓ Innovation and Entrepreneurship (MBA7066) – Optional
- ✓ Professional Project (MBA7067) – Core
- ✓ Academic Skills and Professional Practice (MBA7068) – Core

# MASTER OF BUSINESS ADMINISTRATION (MBA)

## Master's Degree

### Career Prospects

The Master of Business Administration qualification will give graduates the opportunity to explore a global career in a variety of roles wide with financial institutions, technology companies, blue-chip companies and even SMEs. These may be within the private, public or voluntary sector, or a multinational company. Graduates may also explore a range of other careers within:

- Accountancy
- Hotel and leisure management
- Public relations
- Financial management
- Information systems
- Market research analysis
- Product management
- Teaching and education
- Media (TV, film, online, newspaper, magazine)
- Advertising
- Logistics
- Banking
- Project management

### Entry Requirements

- You should have both of the following: significant work experience in a business or management capacity; and a UK Honours degree/postgraduate degree (or equivalent) in a relevant subject.
- We'll consider your application if you don't possess the above qualifications but have substantial managerial experience.
- We'll consider applications where appropriate work experience can be demonstrated in lieu of, or in addition to, the published academic qualifications in line with the University's Recognition of Prior Experiential Learning (RPEL) procedures.
- You may be required to attend an interview and/or provide a portfolio of work.
- When applying you must include a reference from your current employer. The reference should clearly state how long you have been employed by them and give a breakdown of your job content and roles and responsibilities.
- Your application form will need to be accompanied by a reflective overview of the managerial responsibilities you have undertaken to date.

- If English isn't your first language you'll also need IELTS 6.0 with no less than 5.5 in any band (or equivalent). We also accept a range of other English language qualifications – please visit our English Language Requirements web page for more details.

### Course Specification

Duration:	1 year
Level:	RQF Level 7
Awarding Body:	University of Bolton
Assessment:	Written Exams & Coursework
Delivery:	Full Time
Timetable:	Weekday / Weekend / Evening Classes
Intake dates:	September, January, April
Fee:	£9,000 per year (Home fees) £14,450 per year (Overseas fees)

Delivered in partnership with:



London Academic Centre



Regent  
College  
London

# MSC INTERNATIONAL MANAGEMENT

Master's Degree



The **MSc International Management degree** offers a comprehensive overview of global management theories and practices and the opportunity to gain an in depth understanding of the different national and cultural contexts in which firms operate, whilst developing and enhancing analytical and research skills. The course includes a range of relevant subject areas in corporate strategy, international human resource management, sustainability, business innovation as well as finance and accounting that is aimed at developing the necessary knowledge, management and decision making skills that can be applied to international settings. The breadth of topics, combined with an international perspective, prepares you for a variety of roles in an increasingly globalised job market.

Being intellectually stimulating and challenging, the course opens up career development opportunities as well as the opportunity to enhance your knowledge and career prospects in areas of further study.

## Why should I complete the MSc International Management Degree?

Contemporary businesses need managers who can adapt to the ever-changing complex challenges that shape today's globalised marketplace.

The MSc in International Management is a notable qualification to acquire as it takes your employability to global fronts. By empowering you with necessary business skills and knowledge, the course offers you the opportunity to gain a globally recognised qualification and make your mark wherever you decide.

## Why Regent College London?

- ✓ Highly knowledgeable, experienced lecturers who will ensure you get the help and advice you need to succeed
- ✓ Guest speakers from industry and business, enabling you to benefit from their knowledge, advice and guidance
- ✓ Flexible study options that allow you to fit your study around your personal and / or professional commitments
- ✓ Small classes which ensure that you'll receive the full attention and support of our exceptional teaching team
- ✓ A central location offering excellent teaching and learning facilities in the heart of London's west-end
- ✓ At Regent College London all our students have allocated named support from an Academic and a dedicated Customer Support officer throughout their student journey

## Modules

- ✓ International Marketing Management (IMA7001) – Core
- ✓ Information Systems for Business Performance (IMA7004) - Core
- ✓ HR In A Global Context (IMA7003) – Core
- ✓ Research Methods (MBA7018) – Core
- ✓ Dissertation (IMA7006) – Core
- ✓ Strategy (MBA7061) – Core
- ✓ Innovation and Entrepreneurship (MBA7066) – Core
- ✓ Academic Skills and Professional Practice (MBA7068) – Core
- ✓ Financial Management and Decision Making (MBA7060) - Core

Career Prospects

The Masters Degree in International Management will give graduates the opportunity to explore a global career in management and to work with International Organizations. This course is designed to prepare you for a variety of management roles across a range of sectors and variety of organisation. This may be within the private, public or voluntary sector, or a multinational company or SME.

A few roles that graduates can explore are within:

- Marketing
- HR
- Finance
- Information systems
- Strategic management
- Management consultancy
- International banking and in the commodities markets

Entry Requirements

- ✓ You should have an Honours degree (or equivalent) in a relevant subject.
- ✓ Applications will also be considered where appropriate work experience can be demonstrated in lieu of, or in addition to, the published academic qualifications in line with the University's Recognition of Prior Experiential Learning (RPEL) procedures.
- ✓ You may be required to attend an interview and/or provide a portfolio of work.
- ✓ If English isn't your first language you will also need IELTS 6.0 with no less than 5.5 in any band (or equivalent). We also accept a range of other English language qualifications.

Course Specification

Duration:	1 year
Level:	RQF Level 7
Awarding Body:	University of Bolton
Assessment:	Coursework 80%, Written exams 20%
Delivery:	Full Time
Timetable:	Weekday / Weekend / Evening Classes
Intake dates:	September, January, April
Fee:	£7,920 per year (Home Fees) £13,550 per year (Overseas Fees)

Delivered in partnership with:



London Academic Centre

# SCHOOL OF HEALTH AND SPORTS SCIENCE

Health, Nutrition, and Sports are forever increasing in popularity and public demand. Our programmes offer crucial insights into various aspects of the sector, including Sociology, Public Health, Nutrition, Anatomy and Physiology, Biomechanics and research.

We offer a range of Health, Social Care, and Sports courses at different study levels, inviting students of all capabilities to enhance their skills and knowledge with us.

As an RCL student with us, you'll learn in small, focused classes alongside expert academics and subject specialists with extensive experience. No matter which course you choose to study, the skills, knowledge, and qualifications you gain will help you stand out from the crowd and get ahead in your field.



# HND IN HEALTH CARE PRACTICE

(Integrated Health  
and Social Care)

Higher National  
Diploma



The **HND in Health Care Practice** will give you a good basis of the Healthcare Industry, allowing you to explore a range of modules. The Course is designed to develop students as professional, self-reflecting individuals able to meet the demands of employers in the healthcare sector and adapt to a constantly changing world. The qualifications aim to widen access to higher education and enhance the career prospects of those who undertake them.

The key aim is allowing students with the Health Care Practice skills, knowledge and the understanding necessary to achieve high performance in the global health and social care environment. In addition, students will be provided insight and understanding into the diversity of roles within the healthcare sector, recognising the importance of collaboration at all levels.

The Pearson HND in Health Care Practice course is ideal for those who would like to gain the first two years of a Health Care Practice degree, and then move onto a 1 year top-up at University to gain a full Bachelor's degree.

At Regent College London, we have some of the best academic team within the education sector whom deliver engaging lessons to our students. In addition, small class sizes ensure 1-2-1 advice and help are given when needed.

## Who is the HND in Health Care Practice (Integrated Health and Social Care) for?

Awarded by Pearson, the HND in Health Care Practice is aimed at students wanting to continue their education through applied learning and designed for students who wish to pursue or advance their career in healthcare practice or related fields.

Our highly experienced and dedicated team will lead you in an exploration of the principles of care, professional values, attitudes and behaviour, ethical practice of care, and a range of other intriguing topics.

Our focus is on helping you become a knowledgeable, compassionate, and person-centred care professional.

# HND IN HEALTH CARE PRACTICE

(Integrated Health and Social Care)  
Higher National Diploma



## Units/Modules

### LEVEL 4

- ✓ Unit 1 - Law, Policy and Ethical Practice in HSC (Core)
- ✓ Unit 2 - Demonstrating Professional Principles and Values in Health and Social Care Practice (Core)
- ✓ Unit 3 - Supporting the Individual Journey through Integrated Health and Social Care (Core)
- ✓ Unit 4 - Fundamentals of Evidence-based Practice (Pearson-set Project) (Core)
- ✓ Unit 11 - Changing Perspective in Public Health (Optional)
- ✓ Unit 13 - Supporting Individuals with Specific Needs (Optional)
- ✓ Unit 17 - Effective Reporting and Record-keeping in Health and Social Care Services (Optional)

### LEVEL 5

- ✓ Unit 18 - Innovation and Improvement through Action Research (Pearson-set Project) (Core)
- ✓ Unit 19 - Reflective Approaches in Implementing Person-centred Practice (Core)
- ✓ Unit 20 - Care planning Processes in Health Care Practice (Optional)
- ✓ Unit 22 - Supporting Individuals through Significant Life Events (Specialist)
- ✓ Unit 25 - Facilitating Change in Healthcare Environments (Specialist)
- ✓ Unit 26 - Supporting Team and Partnership Working across Health and Social Care Service (Specialist)
- ✓ Unit 28 - Holistic Approaches to Health Promotion (Specialist)

## Career Prospects

This Higher National Diploma prepares students for a wide range of employment opportunities across private and public sector organisations. Job roles for successful candidates include:

- Senior care assistant
- Senior support worker in a range of health and care settings
- Integrated support worker
- Health educator
- Healthcare manager
- Nursing

## Entry Requirements

- ✓ GCSE passes at grades 'A to C' including English Language, and either a minimum of one A Level at grades 'A' to 'E', or a BTEC Level 3 Certificate or Diploma, or an Access to Higher Education Certificate awarded by an approved further education institution: or
- ✓ College-recognised certificated learning equivalent to the above. Where possible Regent College London uses the NARIC database to determine equivalents to GCSE and A level qualifications; or
- ✓ Normally, two or more years of work experience at a managerial/supervisory/admin level relevant to the programme applied for. This must be evidenced via a personal statement, work experience form and successful interview, and supported by employment reference(s) indicating the duration of employment and the role.

You may be eligible to join a HND programme if you have previous learning that satisfies the learning outcomes and assessment criteria for the course you are interested in, normally with 90 credits (subject to syllabus studied previously). It is your responsibility to demonstrate this with objective evidence.

Prospective students who are not UK nationals, or who are UK nationals but do not have GCSE English Language at grades A to C, are required to take our English language assessment. If you hold IELTS grade 5.5, with both reading and writing at grade 5.5, you do not need to sit this assessment.

If you do not meet the required standard of English in the assessment, you will be offered an English language course to help you improve your English to the necessary level to gain admission to the Pearson HND in Health Care Practice (Integrated Health and Social Care programme).

## Course Specification

Duration:	2 years
Level:	RQF Level 5
Awarding Body:	Pearson
Delivery:	Full Time
Intake dates:	January, April, June, September
Fee:	£9,250 per year (Home fee)





# BSc (HONS) HEALTH AND SOCIAL CARE

## with Foundation Year

Delivered in partnership with the University of Bolton, the **BSc (Hons) in Health and Social Care with Foundation Year** is delivered in excellent teaching facilities which provide a stimulating learning environment that will be both engaging and memorable. This Foundation Year Course offers you the opportunity to develop the values, practical skills and knowledge necessary for a successful career in the global health and social care environment.

Our highly experienced and dedicated team will lead you in an exploration of the principles of care, professional values, attitudes and behaviour, ethical practice of care, promoting physical and mental health and emotional wellbeing and safeguarding and promoting diversity and inclusion. Our focus is on helping you become a knowledgeable, compassionate, and person-centred care professional.

### Why should I do the BSc (Hons) Health and Social Care with Foundation Year?

This degree will give you a good foundation, allowing you to work in a wide range of statutory, voluntary and independent settings, including local authority teams, health promotion projects, refugee and asylum service hospitals, sheltered accommodation, hospices and day centres, and residential care units.

In addition, graduates with a health and social care background are also in a good position to be considered for careers in health education and health promotion, welfare, health research, community mental health and commissioning and care management services.

Graduates may seek roles as service managers and coordinators, in advocacy, education and training, or as

technicians and support workers helping children and families, older and disabled people, drug and alcohol abusers, and people with mental health problems.

### Modules

- ✓ Reading Modern Society (FND3001) Compulsory
- ✓ The Individual and Society (FND3002) Compulsory
- ✓ Research Methods in Social Science (FND3003) Compulsory
- ✓ The World of Work (FND3004) Compulsory
- ✓ Reading Contemporary Society (FND3005) Compulsory
- ✓ Self-reflection and Academic Skill Development (FND3012) Compulsory
- ✓ Legal and Ethical Issues (HSO4001) Compulsory
- ✓ Introduction to Social Policy (HSO4002) Compulsory
- ✓ Principles of Care (HSO4004) Compulsory
- ✓ Anatomy & Physiology for Health and Social Care (HSO4007) Compulsory
- ✓ Introduction to Research and Evidence-Based Practice (HSO4008) Compulsory
- ✓ Enhancing Communication and Academic Skills (HSO4009) Compulsory
- ✓ Group Dynamics and Working in Teams (HSO5000) Compulsory
- ✓ Work-based Experience (HSO5003) Compulsory
- ✓ Health Promotion - Challenges and Opportunities (HSO5004) Compulsory
- ✓ Social Inclusion, Empowerment and Health (HSO5005) Compulsory
- ✓ Employability Skills (HSO5006) Compulsory
- ✓ Person Centred Health and Social Care (HSO5007) Compulsory

# BSc (HONS) HEALTH AND SOCIAL CARE

## with Foundation Year

- ✓ Research Proposal/Methods (HSO6000) Compulsory
- ✓ Compassionate Health and Social Care (HSO6001) Compulsory
- ✓ Dissertation/Research Project (HSO6002) Compulsory
- ✓ Safeguarding Children (HLT6027) Optional
- ✓ Safeguarding Vulnerable Adults (HLT6012) Optional
- ✓ Care of the Older Person (HLT6015) Optional
- ✓ Contemporary Mental Health (HLT6060) Optional
- ✓ Working With Children and Families (HLT6125) Optional

### Progression Opportunities

A degree in health and social care looks at health in its broad context and investigates contemporary health issues. There's a growing demand for health and social care workers who are not restricted by boundaries and can work flexibly to accommodate the increasingly complex health and social care needs of individuals, families and communities.

This degree will also enable you to develop a range of key transferable employability skills, including written and verbal communication skills, IT skills, and the ability to work independently and in a team, research and data analysis skills, and the ability to provide support and guidance.

### Entry Requirements

<b>UCAS points:</b>	<b>48</b>
<b>Level 3:</b>	<b>Any subjects are acceptable</b>
<b>GCSEs:</b>	<b>Five at grade C or above / grade 4 to 9</b>
<b>IELTS:</b>	<b>5.0 with no less than 4.5 in any band (non-native speakers)</b>

If you didn't study GCSEs / A-Levels and have non-traditional entry qualifications or relevant work experience we will be happy to consider your application. You'll be required to attend an interview as part of the admissions process.

The College is required to carry out DBS checks for students undertaking compulsory placements where they are working with vulnerable groups and engaging in regulated activity.

To join this course, you must complete an enhanced DBS check and will be required to disclose certain criminal record information prior to starting your studies. We will cover any costs associated with carrying out the DBS check as part of your tuition fee.

### Course Specification

<b>Duration:</b>	<b>4 years</b>
<b>Level:</b>	<b>RQF Level 3-6</b>
<b>Awarding Body:</b>	<b>University of Bolton</b>
<b>Assessment:</b>	<b>Exams, essays, reports and presentations</b>
<b>Timetable:</b>	<b>Week Days / Evenings / Weekends</b>
<b>Intake dates:</b>	<b>September, January, April, June</b>
<b>Fee:</b>	<b>£9,250 per year (Home fee)</b>

Delivered in partnership with:



London Academic Centre

# BSc (HONS) SPORT AND EXERCISE NUTRITION

with Foundation Year



With exercise and health constantly being promoted by the Government and society, there has never been a better time to study a Sport and Exercise Nutrition course. Studying this field will provide you with the essential skills and training that are recognised by professional bodies, allowing you to stand out as a specialist in the world of employment.

This programme provides an insight into why exercise and nutrition are crucial to our health. From understanding the relationship between psychology and sport to food science, you will deepen your understanding of the effects of regular exercise and sports nutrition. Most of all, why they are essential to maintaining healthy lifestyles.

## Why should I complete the BSc (Hons) Sport and Exercise Nutrition with Foundation Year?

Lower entry enables students to study Sport and Exercise Nutrition without the previous qualifications or achievements that most other colleges or universities across the UK require. With the help of the Foundation year, you will learn the basics and core modules, providing you the opportunity to take your first steps into this exciting, global business.

## Modules

### FOUNDATION YEAR

- ✓ Critical Skills in Science (Core)
- ✓ Professional Integrity in Science (Core)
- ✓ Introduction to Research Methods and Individual Project (Core)
- ✓ The Chemistry of Nature (Core)
- ✓ Foundations of Life (Core)
- ✓ Principles of Physics and Mathematics (Core)

### YEAR ONE

- ✓ Energy and Nutrition (Core)
- ✓ Micronutrients (Core)
- ✓ Introduction to Research (Core)
- ✓ Physiology of Exercise (Core)
- ✓ Food Science and Novel Foods (Core)
- ✓ Food Choice and Control of Food Intake (Core)

### YEAR TWO

- ✓ Nutritional and PA Assessment (Core)
- ✓ Research Methods (Core)
- ✓ Physiology of Training (Core)
- ✓ Sports Nutrition (Core)
- ✓ Social Psychology of Sport (Optional)
- ✓ Nutritional Biochemistry (Optional)
- ✓ Nutrition and PA for Health and Disease Prevention (Optional)
- ✓ Experience and Employment in a Business (Optional)
- ✓ Experience and Employment in Sport (Optional)

### YEAR THREE

- ✓ Research Project (Core)
- ✓ Nutrition and the Athlete (Core)
- ✓ Applied Sport and Exercise Physiology (Core)
- ✓ Weight Management (Optional)
- ✓ Applied Sport Psychology (Optional)
- ✓ Environmental Physiology (Optional)
- ✓ Managing in the Workplace (Optional)
- ✓ The Enterprising Workplace (Optional)
- ✓ Building a Start-up Business (Optional)

# BSc (HONS) SPORT AND EXERCISE NUTRITION

## with Foundation Year

### Career Prospects

As there is a growing interest in sport and exercise science, increased job opportunities are available. Upon graduating, you can explore a range of job roles, which include:

- Exercise physiologist
- Fitness centre manager
- Personal trainer
- Primary school teacher
- Secondary school teacher
- Sports administrator
- Sports coach
- Sports development officer

### Entry Requirements

#### Standard entry requirements:

- 48 UCAS points (or equivalent)
- GCSE Maths grade C/4 and English grade C/4
- IELTS score of 5.0 (no grade below 4.5)

#### Nonstandard applicant requirements:

##### Access qualifications:

- 45 credits on your Access Course
- IELTS score of 5.0 (no grade below 4.5)

##### Alternative assessment:

For mature students (those over 21 years old), or those requiring an alternative kind of assessment:

- You must take part in an academic interview to demonstrate your non-academic achievements, such as work experience.
- IELTS score of 5.0 (no grade below 4.5)

### Course Specification

Duration:	4 years
Level:	RQF Level 3-6
Awarding Body:	St Mary's University
Assessment:	Course work and written exam plus Formative Assessment (FAS)
Timetable:	Weekdays / Evenings / Weekends
Intake dates:	September, January, April, June
Fee:	£9,250 per year (Home fees)

Delivered in partnership with:



# BSc (HONS) SPORT AND EXERCISE SCIENCE

with Foundation Year

The **BSc (Hons) Sport and Exercise Science with Foundation Year** covers a range of modules that will equip you for the world of work. Physical activity and sports play a leading role in today's global society from coaching and helping athletes recover from injury to competing in international events.

You will gain access to a faculty of industry experts and the best tutors in their academic field. Our flexible teaching deliver method allows you to decide how and when to study.

The modules cover areas such as Physiology of Exercise, Sports Biomechanics and Environmental Physiology. Our facilities and experienced academic tutors combined will ensure you get the most from your time with Regent College London and prepare you for your future career.

## Why should I study the BSc (Hons) Sport and Exercise Science with Foundation Year?

The degree has been designed to enable you to enter an undergraduate degree even if you do not hold traditional qualifications or cannot meet the necessary requirements to enter the standard three-year degree. The foundation year of this degree provides you with a grounding to learn the core modules of the course, in turn, building your confidence, knowledge, and skills for further study.

You will benefit from studying at our central London study location, with access to St Mary's University's long and unique association with sport that also has good access to professional sports clubs. Your Sport and Exercise Science degree takes our extensive experience in this area and uses it to provide an applied focus, exploring the factors that contribute to enhanced sports performance.

A 2019 report by the Physiological Society found that students get £5.50 back in higher wages for each £1 spent

on a Sport and Exercise Science degree. This would give you an extra £667,000 in earnings across your working life, compared to if you finished your education after your A Levels.

## Modules

### FOUNDATION YEAR

- ✓ Introduction to Research Methods and Individual Project (Core)
- ✓ Critical Skills in Science (Core)
- ✓ Chemistry of Nature (Core)
- ✓ Foundations of Life (Core)
- ✓ Principles of Physics and Mathematics (Core)
- ✓ Professional Integrity in Science (Core)

### YEAR ONE

- ✓ Introduction to Research (Core)
- ✓ Physiology of Exercise (Core)
- ✓ Fundamentals of Sport Psychology and Skill Acquisition (Core)
- ✓ Functional Anatomy (Core)
- ✓ Fundamentals of Biomechanics (Core)
- ✓ Practical Field Tests in Sport (Core)

### YEAR TWO

- ✓ Research Methods (Core)
- ✓ Physiology of Training (Optional)
- ✓ Social Psychology of Sport (Optional)
- ✓ Neuromechanics of Human Movement (Optional)
- ✓ Sports Biomechanics (Optional)
- ✓ Testing and Monitoring in Sport (Optional)
- ✓ Contemporary Issues in PE and Sport (Optional)
- ✓ Skill Acquisition 1 (Optional)
- ✓ Notational Analysis (Optional)
- ✓ Experience and Employment in Sport (Optional)

# BSc (HONS) SPORT AND EXERCISE SCIENCE

## with Foundation Year

### YEAR THREE

- ✓ Research Project (Core)
- ✓ Applied Sport and Exercise Physiology (Optional)
- ✓ Environmental Physiology (Optional)
- ✓ Applied Sport Psychology (Optional)
- ✓ Experimental Biomechanics (Optional)
- ✓ Applied Biomechanics (Optional)
- ✓ Performance Analysis (Optional)
- ✓ Professional Observation (Optional)
- ✓ Issues in Sport, Health, and Exercise (Optional)
- ✓ Advanced Skill Acquisition (Optional)
- ✓ Advanced Contemporary Issues in PE and Sport (Optional)

### Progression Opportunities

As there is a growing interest in sport and exercise science, there are increased job opportunities available. Upon graduating, you can explore a range of job roles, which include:

- Exercise physiologist
- Fitness centre manager
- Personal trainer
- Primary school teacher
- Secondary school teacher
- Sports administrator
- Sports coach
- Sports development officer

### Entry Requirements

#### Standard entry requirements:

- 48 UCAS points (or equivalent)
- GCSE Maths grade C/4 and English grade C/4
- IELTS score of 5.0 (no grade below 4.5)

#### Non-standard applicant requirements:

Access qualifications:

- 45 credits on your Access Course
- IELTS score of 5.0 (no grade below 4.5)

#### Alternative assessment:

For mature students (those over 21 years old), or those requiring an alternative kind of assessment:

- You must take part in an academic interview to demonstrate your non-academic achievements, such as work experience.
- IELTS score of 5.0 (no grade below 4.5)

### Course Specification

Duration:	4 years
Level:	RQF Level 3-6
Awarding Body:	St Mary's University
Assessment:	Course work and written exam plus Formative Assessment (FAS)
Timetable:	Weekdays / Evenings / Weekends
Intake dates:	September, January, April, June
Fee:	£9,250 per year (Home fee)

Delivered in partnership with:



St Mary's  
University  
Twickenham  
London



Regent  
College  
London

# BSc (HONS) HEALTH AND SOCIAL CARE

Bachelor's Degree

## Your Career in Our Care

Health and Social Care relates to services that are available from health and social care practitioners that provide health care support to a range of individuals with issues faced by vulnerable individuals and groups such as children, older people, those with mental illness and disabilities.

## Why do a Health and Social Care degree?

The **BSc (Hons) in Health and Social Care** is delivered in excellent teaching facilities which provide a stimulating learning environment that will be both engaging and memorable.

This course offers you the opportunity to develop the values, practice skills and knowledge necessary for a successful career in the global health and social care environment.

Our highly experienced and dedicated team will lead you in an exploration of the principles of care, professional values, attitudes and behaviour, ethical practice of care, promoting physical and mental health and emotional wellbeing and safeguarding and promoting diversity and inclusion.

Our focus is on helping you become a knowledgeable, compassionate, and person-centred care professional.

Make a difference to the daily lives of vulnerable people by studying the **BSc (Hons) in Health and Social Care**.

## What can I do with the BSc (Hons) Health and Social Care?

This degree will give you a good foundation, allowing you to work in a wide range of statutory, voluntary and independent settings, including local authority teams,

health promotion projects, refugee and asylum service hospitals, sheltered accommodation, hospices and day centres, and residential care units.

In addition, graduates with a health and social care background are also in a good position to be considered for careers in health education and health promotion, welfare, health research, community mental health and commissioning and care management services.

Graduates may seek roles as service managers and coordinators, in advocacy, education and training, or as technicians and support workers helping children and families, older and disabled people, drug and alcohol abusers, and people with mental health problems.

# BSc (HONS) HEALTH AND SOCIAL CARE

## Bachelor's Degree



### Modules

- ✓ Legal and Ethical Issues (HSO4001) Compulsory
- ✓ Introduction to Social Policy (HSO4002) Compulsory
- ✓ Principles of Care (HSO4004) Compulsory
- ✓ Anatomy & Physiology for Health and Social Care (HSO4007) Compulsory
- ✓ Introduction to Research and Evidence-Based Practice (HSO4008) Compulsory
- ✓ Enhancing Communication and Academic Skills (HSO4009) Compulsory
- ✓ Group Dynamics and Working in Teams (HSO5000) Compulsory
- ✓ Work-based Experience (HSO5003) Compulsory
- ✓ Health Promotion - Challenges and Opportunities (HSO5004) Compulsory
- ✓ Social Inclusion, Empowerment and Health (HSO5005) Compulsory
- ✓ Employability Skills (HSO5006) Compulsory
- ✓ Person Centred Health and Social Care (HSO5007) Compulsory
- ✓ Research Proposal/Methods (HSO6000) Compulsory
- ✓ Compassionate Health and Social Care (HSO6001) Compulsory
- ✓ Dissertation/Research Project (HSO6002) Compulsory
- ✓ Safeguarding Vulnerable Adults (HLT6012) Optional
- ✓ Care of the Older Person (HLT6015) Optional
- ✓ Working With Children and Families (HLT6125) Optional
- ✓ Safeguarding Children (HLT6027) Optional
- ✓ Contemporary Mental Health (HLT6060) Optional

### Progression Opportunities

A degree in health and social care looks at health in its broad context and investigates contemporary health issues. There's a growing demand for health and social care workers who are not restricted by boundaries and can work flexibly to accommodate the increasingly complex health and social care needs of individuals, families and communities.

This degree will also enable you to develop a range of key transferable employability skills, including written and verbal communication skills, IT skills, and the ability to work independently and in a team, research and data analysis skills, and the ability to provide support and guidance.

### Entry Requirements

**UCAS points:** 96

**Level 3:** Any subjects are acceptable

**GCSEs:** Five at grade C or above / grade 4 to 9

**IELTS:** 6.0 with no less than 5.5 in any band (non-native speakers)

If you are an international student, you must take a Secure English Language Test (SELT). You can only take a SELT with one of the following providers: IELTS SELT Consortium including UKVI Academic IELTS, LanguageCert, Pearson and PSI Services (UK) Ltd.

If you didn't study GCSEs / A-Levels and have non-traditional entry qualifications or relevant work experience you can apply. You'll be required to attend an interview.

The College is required to carry out DBS checks for students undertaking compulsory placements where they are working with vulnerable groups and engaging in regulated activity. You must complete an enhanced DBS check and will be required to disclose certain criminal record information prior to starting your studies. We will cover any costs associated with carrying out the DBS check as part of your tuition fee.

### Course Specification

<b>Duration:</b>	<b>3 years</b>
<b>Level:</b>	<b>RQF Level 4-6</b>
<b>Awarding Body:</b>	<b>University of Bolton</b>
<b>Assessment:</b>	<b>Exams, essays, reports, and presentations</b>
<b>Timetable:</b>	<b>Week Days / Evenings / Weekends</b>
<b>Intake dates:</b>	<b>September, January, April, June</b>
<b>Fee:</b>	<b>£9,250 per year (Home fee) £13,550 per year (Overseas fee)</b>

Delivered in partnership with:



London Academic Centre



# BSc (HONS) HEALTH AND SOCIAL CARE

## Top-Up Degree

The **BSc (Hons) Health and Social Care Top-up degree** will give you the knowledge and practical understanding employers look for in today's healthcare climate. You will explore key topics including safeguarding children, care of the older person, contemporary mental health, and a range of other health and social care topics.

Whether your ambition is to take on a senior leadership role for a healthcare provider or to drive forward the success of your own healthcare business, this Top-Up Degree will build on your previous studies in healthcare and take understanding to the next level. The course offers you the opportunity to build on previous qualifications to develop the values, skills, and knowledge essential to good health and social care practice, opening the door to a huge range of employment opportunities.

The BSc (Hons) Health and Social Care Top-up is a progression route from a Level 5 healthcare related course to gaining a full degree awarded by the University of Bolton, our validation partner.

### Who is the BSc (Hons) Health and Social Care Top-up course for?

This one-year course is primarily aimed at those who wish to develop critical, cognitive, professional, and intellectual approaches to healthcare. The health and social care top-up is suitable for those who already have a broad healthcare-related HND, foundation degree, or Level 5 equivalent. We offer flexible timetables to help you fit your studies around your busy life, and our London campuses run weekend, weekday, and evening study options.

### Modules

- ✓ Research Proposal/Methods (HSO6000) (Core)
- ✓ Compassionate Health and Social Care (HSO6001) (Core)
- ✓ Dissertation/Research Project (HSO6002) (Core)
- ✓ Safeguarding Children (HLT6027) (Optional)
- ✓ Working With Children and Families (HLT6125) (Optional)
- ✓ Safeguarding Vulnerable Adults (HLT6012) (Optional)
- ✓ Care of the Older Person (HLT6015) (Optional)
- ✓ Contemporary Mental Health (HLT6060) (Optional)

# BSc (HONS) HEALTH AND SOCIAL CARE

## Top-Up Degree

### Career Prospects

Throughout the course, you will develop new skills whilst enhancing your current knowledge. Upon successful completion, you'll be better placed to enter employment within the healthcare sector and also pursue further study is a popular option for health and social care graduates.

Graduates of healthcare degrees can secure employment in some of the following areas:

- health education and promotion
- health research
- community mental health
- commissioning and care management services
- Social work (additional training is required)
- Nursing (additional training is required)

### Entry Requirements

You are normally expected to have completed a relevant qualification at Level HE5, such as a Foundation Degree or HND, or professional qualification at an equivalent level.

If you are an international student, you must take a Secure English Language Test (SELT). You can only take a SELT with one of the following providers: IELTS SELT Consortium including UKVI Academic IELTS, LanguageCert, Pearson and PSI Services (UK) Ltd. Please [see here](#) for the minimum scores required for each. You may be required to attend an interview and/or provide a portfolio of work.

### Course Specification

Duration:	1 year
Level:	RQF Level 6
Awarding Body:	University of Bolton
Assessment:	Written exams, course work, practical exams
Timetable:	Weekday / Weekend / Evening Classes
Intake dates:	September, January, April, June
Fee:	£9,250 per year (Home fee)

\*Subject to validation

Delivered in partnership with:



London Academic Centre



# MSc SOCIAL CARE, HEALTH AND WELLBEING

## Master's Degree

Our **MSc in Social Care, Health and Wellbeing** degree will give you an advanced awareness and understanding of the health and social care sector and the challenges that it faces. Specialist modules will broaden your understanding of key areas such as equality and diversity, integration, and collaboration. You will also develop enhanced critical and evaluative awareness of the current and emerging issues within health and social care practice.

Once you have qualified, you will have gained specific academic knowledge and practical skills that can be applied in your existing or future career. Alongside this, we will help you build lifelong learning skills that you can reflect on, articulate, and translate into everyday life.

### Why should I do the MSc Social Care, Health and Wellbeing Degree?

The demand for skilled and qualified health and social care workers is increasing and is fostered by transformative changes in the healthcare sector. After successfully completing this programme, you will be able to demonstrate systematic knowledge and understanding of a range of health and social care-related principles, concepts, and values.

We focus on supporting you to integrate these ideas with your existing knowledge of social care, health, and wellbeing, helping you to achieve career success and champion the uniqueness of individuals, carers, and their families.

### Modules

- ✓ Dissertation (HSC7006)
- ✓ Postgraduate Preparation for Research Design (HSC7004)
- ✓ Critical Reading and Writing Skills (HSC7002)
- ✓ Equality and Diversity for Human Services (HSC7003)
- ✓ Leadership and Innovation (HSC7005)
- ✓ Contemporary Issues, Policy, and Practice (HSC7001)
- ✓ Collaborative and Integration in Health and Social Care (HSC7007)
- ✓ Person-Centered Approaches and Service User Involvement in Health and Social Care (HSC7008)

# MSc SOCIAL CARE, HEALTH AND WELLBEING

## Master's Degree



### Career Prospects

The MSc in Social Care, Health and Wellbeing is a well recognised qualification that provides the opportunity to develop your knowledge for an existing role, improve your prospects, or make a career change. It can also be a first step towards an academic career.

This qualification can take you into many different fields - both in the UK and abroad - including multi-agency teams, health promotion projects, refugee and asylum services, hospitals, sheltered accommodation, hospices, day centres, and residential care units.

Graduates of this programme may also choose to progress to study at doctorate-level in health and social care, or a related field.

### Entry Requirements

You are normally expected to have successfully completed an honours degree (or equivalent) in a relevant subject and have appropriate work experience. You may be required to attend an interview and/or provide a portfolio of work.

### Additional Criteria

- ✓ If English is not your first language you will need to complete a Secure English Language Test at IELTS 6.0 or equivalent with no band less than 5.5.
- ✓ If you are an international student, you must take a Secure English Language Test (SELT). You can only take a SELT with one of the following providers: IELTS SELT Consortium including UKVI Academic IELTS, LanguageCert, Pearson and PSI Services (UK) Ltd.
- ✓ You may be required to attend an interview and/or provide a portfolio of work.

### Course Specification

Duration:	1 Year
Level:	RQF Level 7
Awarding Body:	University of Bolton
Assessment:	Written exams, course work, practical exams
Delivery:	Full Time
Timetable:	Weekday / Weekend / Evening Classes
Intake dates:	September, January, April, June
Fee:	£7,920 per year (Home Fees) £13,550 per year (Overseas Fees)

Delivered in partnership with:



London Academic Centre

# SCHOOL OF ENGINEERING AND COMPUTING

The School of Engineering and Computing brings together the latest insights from engineering, computing, and digital technologies, such as software development, artificial intelligence, future applications, and creative sciences.

As one of the newest schools, formed by merging two former subject areas to offer a wealth of academic and practical knowledge with enhanced resources, the school provides an excellent all-around learning environment for its students. We are committed to developing the next generation of high-achieving, ambitious, confident professionals who will shape business and society.

Studying our programs will equip you with the knowledge and skills that will enable you to extend your development capabilities and give you real experience in real-life scenarios. It is an excellent way for prospective employers to assess your skills for your first job or career development.



# HND IN ENGINEERING

## Higher National Diploma



### Overview

Regent College London (RCL) offers a **Higher National Diploma (HND) in Engineering** that blends study with practical learning. It is ideal for anyone looking to take their first steps into higher education, with a hands-on approach, before either going on to employment or a degree.

Our HND in Engineering is a recognised and respected qualification within the engineering sector. The course provides all the essential skills, knowledge and techniques required to begin your career with a solid grounding. By the end of the course, you will have gained a balanced overview of the sector, a strong level of understanding of the essentials, as well as the core skillset to continue to learn and develop as a professional.

### Who is the HND in Engineering Course for?

The HND in Engineering option is designed to help set you apart from the crowd. Validated by Pearson, the diploma is a two-year, full-time course that has been developed to suit both aspiring engineers and those currently working in the sector. Irrespective of what sort of engineering interests you, this course will help you to achieve your goals. It offers a strong sector-related emphasis on practical, academic and management skills development and is right for anyone wanting a start in the sector.

The course is ideal for those who would like to gain the first two years of an Engineering Degree, and then move onto a one-year, top-up at university to gain a full undergraduate degree.

### Modules

**Electrical / Electronic HND Engineering** consist of following units:

- ✓ Unit 34: Research Project (Mandatory)
- ✓ Unit 35: Professional Engineering Management (Pearson-set) (Mandatory)
- ✓ Unit 39: Further Mathematics (Mandatory)
- ✓ Unit 44: Industrial Power, Electronics and Storage (Mandatory)
- ✓ Unit 45: Industrial Systems (Optional / Specialist)
- ✓ Unit 47: Analogue Electronic Systems (Optional / Specialist)
- ✓ Unit 53: Utilisation of Electrical power (Optional / Specialist)

**Mechanical HND Engineering** units are:

- ✓ Unit 34: Research Project (Mandatory)
- ✓ Unit 35: Professional Engineering Management (Pearson-set) (Mandatory)
- ✓ Unit 36: Advanced Mechanical principles (Mandatory)
- ✓ Unit 37: Virtual Engineering (Mandatory)
- ✓ Unit 39: Further Mathematics (Mandatory)
- ✓ Unit 45: Industrial Systems (Optional / Specialist)
- ✓ Unit 64: Thermofluids (Optional / Specialist)

### Progression Opportunities

This HND prepares students for a wide range of employment opportunities across private and public sector organisations. Job roles for successful candidates include:

- Electronic Engineer
- Mechanical Engineer
- Automotive Engineer
- Maintenance Engineer

Further study and experience in Engineering will also direct access to roles such as Senior Quality Engineer and Senior Geotechnical Engineer.

### Entry Requirements

- ✓ GCSE passes at grades 'A to C' including English Language, and either a minimum of one A-Level at grades 'A' to 'E,' or a BTEC Level 3 Certificate or Diploma, or an Access to Higher Education Certificate awarded by an approved further education institution; or
- ✓ College-recognised certificated learning equivalent to the above. Where possible Regent College London uses the NARIC database to determine equivalents to GCSE and A-Level qualifications; or
- ✓ Normally, two or more years of work experience at a managerial/supervisory/admin level relevant to the programme applied for. This must be evidenced via a personal statement, work experience form and successful interview, and supported by employment reference(s) indicating the duration of employment and the role.

### Alternate Entry Requirements

You may also be eligible to join a HND programme if you have previous learning that satisfies the learning outcomes and assessment criteria for the course you are interested in, normally with 90 credits (subject to syllabus studied previously). It is your responsibility to demonstrate this with objective evidence.

Prospective students who are not UK nationals, or who are UK nationals but do not have GCSE English Language at grades A to C, are required to take our English language assessment. If you hold an International English Language Testing System (IELTS) grade 5.5, with both reading and writing at grade 5.5, you do not need to sit this assessment.

### Course Specification

Duration:	2 years
Level:	RQF Level 5
Awarding Body:	Pearson
Delivery:	Full Time
Intake dates:	January, April, June, September
Fee:	£9,250 per year (Home fee)





# BEng (HONS) SOFTWARE ENGINEERING

with Foundation Year

Retail, manufacturing, defence, healthcare, education – most sectors of government and industry rely on software systems, and professional, competent and the creative software engineers who develop and maintain them.

The **BEng (Hons) in Software Engineering with Foundation Year degree** offers you the skills and knowledge needed to succeed in this field.

## Why do a Software Engineering degree?

Concerned with the building and maintenance of software systems and other computer-based solutions, software engineering is a truly global industry. By examining all elements of the process – from initial understanding of the problem, through analysis, design, and development, to testing, documentation and maintenance, this degree offers you a focused, but fully rounded education.

We will support you to explore the underlying principles of software engineering, while helping you gain knowledge and practical experience of the latest technologies.

You will be encouraged to appreciate both the technical and human aspects involved in areas such as software systems and design, systems analysis, programming, database specification and design, and system security.

In addition to technical knowledge, you will have opportunities to gain experience in communication and presentation, problem solving and time management.

Our focus is on helping you develop industry-relevant skills that prepare you for a career in software engineering.

## What can I do with this qualification?

Software engineering graduates who are new to the field often start out as programmers and work their way up to positions of greater responsibility, whether it's as an architect or a project manager.

Jobs directly related to a software engineering degree include games development, systems development, web design, web development, search engine optimisation, information systems management and business analysis.

There are also a wide variety of career options available within the sectors of business, engineering, health care, gaming, publishing, IT, retail, education, medicine, aerospace and cyber security.

# BEng (HONS) SOFTWARE ENGINEERING

## with Foundation Year

### Modules

- ✓ Fundamentals of Programming (CTF3201) - Core
- ✓ Logical Analysis and Problem Solving (CTF3202) - Core
- ✓ Computer Systems (CTF3203) - Core
- ✓ Foundation Project (CTF3204) - Core
- ✓ Introduction to Software Development (SWE4201) - Core
- ✓ Computing Infrastructure (SWE4202) - Core
- ✓ Databases (SWE4203) - Core
- ✓ Computer Science Fundamentals (SWE4207) - Core
- ✓ Advanced Programming (SWE5201) - Core
- ✓ Data Structures and Algorithms (SWE5202) - Optional
- ✓ Software Engineering (SWE5203) - Core
- ✓ Advanced Databases and Big Data (SWE5204) - Core
- ✓ Undergraduate Project (SEC6201) - Core
- ✓ Agile Programming (SWE6202) - Optional
- ✓ Enterprise Systems Development (SWE6203) - Optional
- ✓ Machine Learning (SWE6204) - Optional
- ✓ Software Quality Management (SWE6205) - Optional

### Progression Opportunities

Software engineers may work at any stage of the software development life cycle. Duties can include producing project requirements, writing algorithms, coding, testing, deployment, or maintenance.

A software engineering graduate will have developed a wide range of technical and transferable skills such as advanced IT skills, analytical skills, communication, creativity and innovation, independence, logic, numeracy, project management and organisation.

The demand for skilled and qualified software engineers is increasing. This is fostered by a transforming economic landscape, driven by the need for computing technology solutions.

### Entry Requirements

<b>UCAS points:</b>	<b>48</b>
<b>Level 3:</b>	Any subjects are acceptable
<b>GCSEs:</b>	Five at grade <b>C or above</b> / grade 4 to 9
<b>IELTS:</b>	<b>5.0</b> with no less than 4.5 in any band (Non-native speakers)

If you didn't study GCSEs / A-Levels and have non-traditional entry qualifications or relevant work experience we will be happy to consider your application. You'll be required to attend an interview as part of the admissions process.

### Course Specification

<b>Duration:</b>	<b>4 years</b>
<b>Level:</b>	<b>RQF Level 3-6</b>
<b>Awarding Body:</b>	<b>University of Bolton</b>
<b>Assessment:</b>	<b>Exams, essays, reports and presentations</b>
<b>Delivery:</b>	<b>Full Time</b>
<b>Timetable:</b>	<b>Week Days / Evenings / Weekends</b>
<b>Intake dates:</b>	<b>September, January, April, June</b>
<b>Fee:</b>	<b>£9,250 per year (Home fee)</b>

Delivered in partnership with:



London Academic Centre



Regent  
College  
London

# BSc (HONS) COMPUTING

with Foundation Year



Our **BSc (Hons) Computing with Foundation Year** is a flexible and far-reaching undergraduate course designed to support you with focused attention, industry insights and excellent IT resources.

Forge your own path into specialisms and potential career options, and move onto the full degree programme with dedicated help from expert teaching staff.

## Why do a Computing degree?

This engaging and flexible course draws on key elements from other study pathways to give you a wide-ranging, industry-informed programme.

As you progress, you will have the opportunity to 'zoom in' on aspects of the subject that you have personal interests and strengths in, or that support your career or study goals.

Our foundation year offers an excellent grounding in the fundamentals of computing, programming and mathematics. It's designed to prepare you for degree level study.

Meanwhile, guest speakers and lecturers give you access to highly relevant and up-to-date input from industry settings.

With intentionally small class sizes, we can offer you more meaningful and personalised interaction with our dedicated and enthusiastic lecturers – many of whom come with extensive industry insights and experience.

## What can I do with this qualification?

Computing skills are essential in today's world. Computing is a global activity and graduates are employable anywhere in the world. Some of the main areas that graduates go into are network design, programming, web development, software application, interactive multi-media roles, IT support, consultancy and operations, E-commerce and business analysis.

Some typical employers include IT consultancies and IT service providers, however, as most businesses rely on computers to function effectively, there are also opportunities within telecommunications, aerospace and defence, financial services, retail, healthcare, manufacturing and the public and third sectors.

After completing this degree, you might also choose to set up your own business offering web design or IT consultancy.

# BSc (HONS) COMPUTING

## with Foundation Year

### Modules

- ✓ Fundamentals of Programming (CTF3201) - Core
- ✓ Logical Analysis and Problem Solving (CTF3202) - Core
- ✓ Computer Systems (CTF3203) - Core
- ✓ Foundation Project (CTF3204) - Core
- ✓ Introduction to Software Development (SWE4201) - Core
- ✓ Computing Infrastructure (SWE4202) - Core
- ✓ Databases (SWE4203) - Core
- ✓ Computer Science Fundamentals (SWE4207) - Core
- ✓ Data Structures and Algorithms (SWE5202) - Optional
- ✓ Advanced Databases and Big Data (SWE5204) - Core
- ✓ Modern Applications (SWE5205) - Core
- ✓ Systems Analysis and Design (SWE5206) - Core
- ✓ Advanced Operating Systems (SEC5204) - Optional
- ✓ Undergraduate Project (SEC6201) - Core
- ✓ Enterprise Systems Development (SWE6203) - Optional
- ✓ Machine Learning (SWE6204) - Optional
- ✓ Software Quality Management (SWE6205) - Optional
- ✓ Emerging Technologies (SWE6206) - Optional
- ✓ Ethical Hacking and Digital Forensics (SEC6202) – Optional

### Progression Opportunities

This course will prepare you to move onto the full degree programme and with computing technologies playing a greater role in all aspects of modern life, graduates find their skills in high demand across a wide range of industries.

A computing degree combines theoretical study and practical projects where you can learn subject specific skills such as programming, systems, databases, computer platforms, website production and networking.

The soft skills that a computing degree can equip you with include communication, leadership and organisational skills, all of which are highly sought after by employers.

### Entry Requirements

**UCAS points:** 48

**Level 3:** Any subjects are acceptable

**GCSEs:** Five at grade **C or above** / grade 4 to 9

**IELTS:** **5.0** with no less than 4.5 in any band  
(Non-native speakers)

If you did not study GCSEs / A-Levels and have non-traditional entry qualifications or relevant work experience we will be happy to consider your application. You will be required to attend an interview as part of the admissions process.


### Course Specification

<b>Duration:</b>	<b>3 years</b>
<b>Level:</b>	<b>RQF Level 3-6</b>
<b>Awarding Body:</b>	<b>University of Bolton</b>
<b>Assessment:</b>	<b>Exams, essays, reports and presentations</b>
<b>Timetable:</b>	<b>Week Days / Evenings / Weekends</b>
<b>Intake dates:</b>	<b>September, January, April, June</b>
<b>Fee:</b>	<b>£9,250 per year (Home fee)</b>

Delivered in partnership with:



London Academic Centre



# BEng (HONS) ELECTRICAL AND ELECTRONIC ENGINEERING

## with Foundation Year

*\*Subject to validation*

The initial year of **BEng (Hons) Electrical and Electronic Engineering with Foundation Year** offers an excellent grounding in the fundamentals of engineering, electronics, and mathematics. It's designed to prepare you for degree-level study. During this first year, you'll explore introductory concepts that encompass various engineering subjects, including mechanics, mathematics, and electrical/electronic engineering. These will prepare you for the ever-increasing cross-disciplinary nature of engineering.

The rapid growth of the technology sector has seen an increased demand for creative, skilled engineers both nationally and internationally. Many global electronics organisations maintain research and development facilities within the UK and Europe. Engineers based in the UK can also be posted overseas to work on projects.

This 4-year degree program is delivered in partnership with the University of Bolton and will give you the engineering-related knowledge and practical skills needed for a professional career in engineering.

Alongside developing your skillset, we will help you build lifelong learning skills so that you can reflect on, articulate, and transfer them to everyday life in order to maximise your success. You will also be able to choose from several optional modules in your final year, which include renewable energies and advanced embedded systems, amongst others.

### Why should I do the BEng (Hons) Electrical and Electronic Engineering with Foundation Year Degree?

The BEng (Hons) Electrical and Electronic Engineering with Foundation Year degree will provide you with excellent capabilities to pursue a successful career within engineering. Employers want graduates who are not just academically qualified but are also work-ready with professional skills in management and leadership.

On completion of this course, you will have gained a host of intellectual and critical thinking skills such as applying engineering principles to critically analyse key engineering processes. After graduating, you can progress into a career in many fields including advance manufacturing, product design, bio medical engineering, or artificial intelligence, among many others. You may also choose to study a master's degree.

### Modules

- ✓ Foundation Principles 0 (ATT3037) Optional
- ✓ Foundation Principles 1 (ATT3033) Core
- ✓ Foundation Principles 2 (ATT3034) Core
- ✓ Engineering Study Skills (ATT3035) Core
- ✓ Engineering Technology (ATT3036) Core
- ✓ Engineering Environment (AME4066) Core
- ✓ Introductory Engineering Mathematics (EEE4016) Core
- ✓ Introductory Electrical Principles (EEE4017) Core
- ✓ Introductory Digital Electronics (EEE4018) Core
- ✓ Introductory Analogue Electronics (EEE4019) Core
- ✓ Introductory Embedded Systems (EEE4020) Core
- ✓ Engineering Modelling and Analysis (AME5019) Core
- ✓ Instrumentation and Control (EEE5016) Core

# BEng (HONS) ELECTRICAL AND ELECTRONIC ENGINEERING

## with Foundation Year

\*Subject to validation



- ✓ Intermediate Digital Electronics and Communications (EEE5017) Core
- ✓ Intermediate Electrical Principles and Enabling Power Electronics (EEE5018) Core
- ✓ Intermediate Embedded Systems (EEE5019) Core
- ✓ Analogue Signal Processing and Communications (EEE5020) Core
- ✓ Major Project (AME6022) Core
- ✓ Management and Enterprise in Engineering (AME6024) Core
- ✓ Electrical Machines and Power Electronic Drives (EEE6018) Core
- ✓ Engineering Electromagnetism (EEE6019) Core
- ✓ Digital Signal Processing (EEE6020) Optional
- ✓ Integrated Circuit Design (EEE6021) Optional
- ✓ Power Systems and Smart Grids (EEE6022) Optional
- ✓ Renewable Energies (EEE6023) Optional
- ✓ Advanced Embedded Systems (EEE6024) Optional

### Career Prospects

In addition to technical knowledge, this degree offers you the opportunity to develop a range of key employability skills that are highly transferrable to a wide range of areas beyond engineering, such as IT, finance and management.

Another possible course of action for graduates is to pursue further study in a specialist field of research. Courses include an MSc or Ph.D. in areas such as internet engineering, nanotechnology, wireless and optical communications, and telecommunications.

### Entry Requirements

UCAS points: 48

You should have a minimum of two GCE A2-level passes (or equivalent), including mathematics and science; and five GCSEs at grade C or above (or equivalent), including English.

Mature students without these qualifications but with relevant industrial experience or alternative qualifications may be considered.

Level 3 in related subject.

College-recognised certificated learning equivalent to the above. Where possible Regent College London uses the NARIC database to determine equivalents to GCSE and A level qualifications.

IELTS 5.0 with no less than 4.5 in any band (non-native speakers). We also accept a range of other English language

qualifications – please visit [English Language Requirements](#) for more details.

If you are an international student, you must take a Secure English Language Test (SELT). You can only take a SELT with one of the following providers: IELTS SELT Consortium including UKVI Academic IELTS, LanguageCert, Pearson and PSI Services (UK) Ltd. You may be required to attend an interview and/or provide a portfolio of work.

### Additional Criteria

Non-standard and mature student entry Engineering related work experience and Intention to study meeting.

Certificate (HND/C) will be considered for direct entry to Level HE5 given good results in Level 4 Mathematics and Science.

Applicants with a Foundation Certificate or Access to HE Diploma are considered.

### Course Specification

Duration:	4 years
Level:	RQF Level 3-6
Awarding Body:	University of Bolton
Assessment:	Written exams, course work, practical exams
Timetable:	Weekday / Weekend / Evening Classes
Intake dates:	September, January, April, June
Fee:	£9,250 per year (Home fee)

Delivered in partnership with:



London Academic Centre

# BEng (HONS) MECHANICAL ENGINEERING

with Foundation Year

*\*Subject to validation*



**Mechanical engineers** are always in demand around the globe. They create solutions and solve problems, and play a central role in the design and implementation of moving parts in a range of industries. This programme will prepare you with the skills and knowledge that you need to succeed in this competitive and diverse field.

The course will see you apply mathematical and statistical methods, tools, and notations in the analysis and solution of complex engineering problems. You will also develop your capabilities in problem-solving, managing workloads, and communicating with a range of individuals. In your foundation year, you will gain an excellent grounding in the fundamentals of the engineering environment and its principles.

## Why should I do the BEng (Hons) Mechanical Engineering with Foundation Year Degree?

This course prepares prospective engineers for meaningful professional employment in the Mechanical Engineering sector.

You will develop your cognitive, intellectual, and problem-solving skills via key principles of mechanical engineering. The demand for skilled and qualified mechanical engineers is increasing, which is fostered by a transforming economic landscape, driven by the need for advanced engineering solutions.

Upon graduation, you will be able to pursue a career in a wide range of industries. Examples include advance manufacturing, product design, bio medical engineering, and artificial intelligence, among many others. You may also choose to study a Master's in a related subject area.

## Modules

- ✓ Foundation Principles 0 (ATT3037) Optional
- ✓ Foundation Principles 1 (ATT3033) Core
- ✓ Foundation Principles 2 (ATT3034) Core
- ✓ Engineering Study Skills (ATT3035) Core
- ✓ Engineering Technology (ATT3036) Core
- ✓ Engineering Environment (AME4066) Core
- ✓ Engineering Principles 1 (AME4067) Core
- ✓ Engineering Principles 2 (AME4068) Core
- ✓ Projects and Systems (AME4069) Core
- ✓ Graphical Communications and Computer
- ✓ Modelling (AME4070) Core
- ✓ Engineering Applications (AME5016) Core
- ✓ Mechanics of Materials and Machines (AME5017) Core
- ✓ Thermofluids and Control Systems (AME5018) Core
- ✓ Engineering Modelling and Analysis (AME5019) Core
- ✓ Engineering in Business and Society (AME5020) Core
- ✓ Major Project (AME6022) Core
- ✓ Advanced Materials and Structures (AME6023) Core
- ✓ Management and Enterprise in Engineering (AME6024) Core
- ✓ Advanced Thermofluids and Control (AME6025) Core
- ✓ Finite Element and Difference Solutions (AME6026) Core

# BEng (HONS) MECHANICAL ENGINEERING

## with Foundation Year

*\*Subject to validation*

### Career Prospects

The BEng (Hons) Mechanical Engineering with foundation year degree is well recognised both nationally and internationally. Once you have graduated with this degree, you will have the opportunity to explore a range of careers in the engineering sector.

Mechanical engineers are employed across many sectors, including aerospace, automotive, chemical, construction, medicine, sport, consumer goods, and electrical. There are career opportunities both in the UK and abroad.

### Entry Requirements

UCAS points: 48

You should have a minimum of two GCE A2-level passes (or equivalent), including any relevant subject; and five GCSEs at grade C or above (or equivalent), including Mathematics, Science, and English.

Mature students without these qualifications but with relevant industrial experience or alternative qualifications may be considered

Level 3 in related subject

College-recognised certificated learning equivalent to the above. Where possible Regent College London uses the NARIC database to determine equivalents to GCSE and A level qualifications

IELTS 5.0 with no less than 4.5 in any band (non-native speakers). We also accept a range of other English language qualifications – please visit our [English Language Requirements](#) web page for more details

If you are an international student, you must take a Secure English Language Test (SELT). You can only take a SELT with one of the following providers: IELTS SELT Consortium including UKVI Academic IELTS, LanguageCert, Pearson and PSI Services (UK) Ltd. Please see [here](#) for the minimum scores required for each. You may be required to attend an interview and/or provide a portfolio of work.

### Additional Criteria

Non-standard and mature student entry: Engineering related work experience and Intention to study meeting.

Edexcel-BTEC Ordinary National Diploma/Certificate in engineering with Level 3 Maths and Science will be considered.

Students who are deemed to have an insufficient understanding of maths determined by the diagnostic assessment will be required to take additional module ATT3037 (Foundation Principles 0).

### Course Specification

Duration:	4 years
Level:	RQF Level 3-6
Awarding Body:	University of Bolton
Assessment:	Written exams, course work, practical exams
Timetable:	Weekday / Weekend / Evening Classes
Intake dates:	September, January, April, June
Fee:	£9,250 per year (Home fee)

Delivered in partnership with:



London Academic Centre



Regent  
College  
London

# MSc SOFTWARE ENGINEERING

Master's Degree



Gain a deeper understanding of advanced software methodologies with the **MSc Software Engineering**.

You will be able to analyse advanced software development and recognise resources required for Software Engineering once you have graduated. Jobs directly related to a Software Engineering degree include games, systems and web development, search engine optimization, information systems management, web design and business analysis. This degree also ensures that you can have access and exposure to the latest techniques alongside practical skills.

At Regent College London, we have a phenomenal student services team! A dedicated student services team member will be assigned to you. They will be your main point of contact through your studies and will always be on hand to help.

## Why should I study for the MSc Software Engineering Degree?

If you are looking to make a mark within the world of Software Engineering, then this course is perfect for you! You will gain several skills which include, cognitive, intellectual, transferable, all of which can be applied to the real world. We have some of the best academic teams within the education sector who deliver engaging lessons to our students. In addition, small class sizes ensure 1-2-1 advice and help when needed.

After graduating, you can progress into a career in many fields including advanced manufacturing, product design, biomedical engineering, or artificial intelligence. You will also have the opportunity to explore a career in various engineering disciplines, such as web development, quality assurance and much more.

## Modules

The MSc Software Engineering programme comprises 5 modules at Level 7 which are all core.

- ✓ Masters Project (SEC7001)
- ✓ Research Methods (SWE7004)
- ✓ Contemporary Software Engineering Practices (SWE7101)
- ✓ Advanced Software Development (SWE7102)
- ✓ Dev Ops (SWE7103)

# MSc SOFTWARE ENGINEERING

## Master's Degree



### Career Prospects

After graduating with an MSc Software Engineering Degree, you will have stimulated your levels of creative thinking and enhanced your problem solving and decision-making techniques; allowing you to impress employers and make your mark within the industry. This course also paves the way for PhD research studies in software engineering and computing-related subjects.

A few roles that you may choose to explore upon graduating with an MSc in Software Engineering are:

- Applications developer
- Cyber security analyst
- Game developer
- Information systems manager
- IT consultant
- Multimedia programmer
- Web developer
- Web designer
- Software engineer

### Entry Requirements

You are normally expected to have successfully completed an honours degree (or equivalent) in a relevant subject and have appropriate work experience. You may be required to attend an interview and/or provide a portfolio of work.

### Additional Criteria

- The standard entry requirement for the course is BSc (Hons) in Computer Science related subjects or BEng (Hons) in Software Engineering, usually with a first or upper second class classification. For applicants without a first or upper second, then a lower second degree will be considered on a case by case basis (particularly for candidates with good relevant industrial experience).
- If English is not your first language you will need to complete a Secure English Language Test at IELTS 6.0 or equivalent with no band less than 5.5.
- If you are an international student, you must take a Secure English Language Test (SELT). You can only take a SELT with one of the following providers: IELTS SELT Consortium including UKVI Academic IELTS, LanguageCert, Pearson and PSI Services (UK) Ltd. Please see [here](#) for the minimum scores required for each. You may be required to attend an interview and/or provide a portfolio of work.

### Course Specification

Duration:	1 year
Level:	RQF Level 7
Awarding Body:	University of Bolton
Assessment:	Written exams, course work, practical exams
Delivery:	Full Time
Timetable:	Weekday / Weekend / Evening Classes
Intake dates:	September, January, April, June
Fee:	£7,920 per year (Home Fees) £13,550 per year (Overseas Fees)

Delivered in partnership with:



London Academic Centre

# SCHOOL OF LAW

The School of Law encompasses law, criminology and policing.

Our courses spark debate and challenge you to think creatively, whilst igniting curiosity about social justice and criminal behaviour. During your time with us, you will develop high-level professional skills to help shape and influence the key everyday decisions that affect the society around us.

You can expect to learn from the best tutors in academia and across the industry; all specialists in their subject areas with expert knowledge and experience in mentoring and tutoring small class sizes.



# BA (HONS) LAW AND BUSINESS

with Foundation Year



Our **BA (Hons) Law and Business with Foundation Year** course is delivered by an industry leading faculty of expert tutors and academics from a broad mix of disciplines and industries in the field of law and business. The course offers flexible study options allowing you to choose which style of learning works best for you. We are pleased to offer all students the opportunity to learn about RCL's unique Personal, Leadership and Growth programme: Thinking into Character. Designed to help you understand, manage, and lead yourself effectively to achieve success in all areas of your professional career.

## Why should I study the BA (Hons) Law and Business with Foundation Year?

The BA (Hons) Law and Business with Foundation Year degree is an ideal programme for students who have an interest in Law and wish to understand its operation and role in the business environment. The degree focusses on practical (as well as theoretical) teaching. This in turn, allows you to develop the analytical and critical skills essential for formulating legal arguments.

You will also study a range of specialist subjects that are specific to your career aspirations, whilst developing all important transferable skills required for any legal workplace. These include; fact management, decision making, research and independent learning; and be equipped with the ability to apply these skills in a wide variety of legal situations.

## Modules

### FOUNDATION YEAR

- ✓ Personal Learning Competencies (Core)
- ✓ Taking a Professional Approach (Core)

- ✓ Rights and Responsibilities I (Core)
- ✓ Rights and Responsibilities II (Core)
- ✓ Thinking Critically, Creatively and Ethically (Core)
- ✓ Individual Study (Core)
- ✓ Thinking into Character (Core)

### YEAR ONE

- ✓ English Legal System (Core)
- ✓ Financial Management (Core)
- ✓ Managing People (Core)
- ✓ Practical Legal Skills (Core)
- ✓ Introduction to Management (Core)
- ✓ Criminal Law (Core)
- ✓ Contemporary marketing practice (Optional)

### YEAR TWO

- ✓ Tort Law (Core)
- ✓ Contract Law (Core)
- ✓ Tort Law 2 (Intellectual Property and Media Law) (Core)
- ✓ Contract Law 2 (Consumer and Commercial Law) (Core)
- ✓ EU Law (Core)
- ✓ Marketing Strategy and Implementation (Optional)
- ✓ Corporate Finance (Optional)

### YEAR THREE

- ✓ Corporate Governance and Social Responsibility (Core)
- ✓ Extended Essay in Law (Core)
- ✓ Employment Law (Core)
- ✓ Company Law (Core)
- ✓ Social Enterprise (Optional)
- ✓ Property Law 2 (Equity and Trusts) (Optional)
- ✓ Family Law (Optional)
- ✓ Insurance law (Optional)
- ✓ Law of International Trade (Optional)
- ✓ Jurisprudence (Optional)

# BA (HONS) LAW AND BUSINESS

## with Foundation Year



### Progression Opportunities

Law is a field that offers exciting career prospects. Upon graduating, you can explore a range of job roles, which include:

- Solicitor
- Barrister
- Paralegal
- Advice worker
- Civil service administrator
- Compliance officer
- Legal executive

### Entry Requirements

Standard entry requirements:

- 48 UCAS points (or equivalent)
- GCSE Maths grade C/4 and English grade C/4
- IELTS score of 5.0 (no grade below 4.5)

**Non-standard applicant requirements:**

**Access qualifications:**

- 45 credits on your Access Course
- IELTS score of 5.0 (no grade below 4.5)

**Alternative assessment:**

For mature students (those over 21 years old), or those requiring an alternative kind of assessment:

- You must take part in an academic interview to demonstrate your non-academic achievements, such as work experience.
- IELTS score of 5.0 (no grade below 4.5)

### Course Specification

Duration:	4 years
Level:	RQF Level 3-6
Awarding Body:	St Mary's University
Assessment:	Course work and written exam plus Formative Assessment (FAS)
Timetable:	Weekdays / Evenings / Weekends
Intake dates:	September, January, April, June
Fee:	£9,250 per year (Home fee)

Delivered in partnership with:



St Mary's  
University  
Twickenham  
London



# LLB (HONS) LAW

with Foundation Year



The **LLB (Hons) with Foundation Year** is a qualifying law degree (QLD) which in turn allows you to continue move onto the next stage of training to enter the legal profession: The BPTC for barristers or the LPC/SQE for solicitors. This course will provide you with a solid foundation for whichever law profession you decide to pursue.

Our LLB with Foundation Year course is delivered by an industry leading faculty of expert tutors and academics from a broad mix of disciplines across industry and academia. The course offers flexible study options allowing you to choose which style of learning works best for you. We are pleased to offer all students the opportunity to learn about RCL's unique Personal, Leadership and Growth programme: Thinking into Character. Designed to help you understand, manage, and lead yourself effectively to achieve success in all areas of your professional career.

## Why should I study the LLB (Hons) Law with Foundation Year?

An LLB Law degree is an ideal programme for students who wish to enter a diverse range of professions outside of the legal profession, such as jobs in the City, civil service, criminal justice/social/probation services, the charitable sector, or the world of business.

The degree enables you to enter an undergraduate degree even if you do not hold traditional qualifications or cannot meet the necessary requirements to enter the standard three-year degree. The foundation year of this degree provides you with a grounding to learn the core modules of the course, in turn, building your confidence, knowledge, and skills for further study.

If you have a passion for law, and want to challenge injustice, this is the degree for you. Once you have

graduated, you will have opportunities to explore different job roles within the field of law, and its surrounding specialities.

## Modules

### FOUNDATION YEAR

- ✓ Personal Learning Competencies (Core)
- ✓ Taking a Professional Approach (Core)
- ✓ Rights and Responsibilities I (Core)
- ✓ Rights and Responsibilities II (Core)
- ✓ Thinking Critically, Creatively and Ethically (Core)
- ✓ Individual Study (Core)
- ✓ Thinking into Character (Core)

### YEAR ONE

- ✓ English Legal System (Core)
- ✓ Public Law (Core)
- ✓ Criminal Law (Core)
- ✓ Public Law 2 (Human Rights) (Core)
- ✓ Criminal Law 2 (International Criminal Law) (Core)
- ✓ Practical Legal Skills (Core)

### YEAR TWO

- ✓ Tort Law (Core)
- ✓ EU Law (Core)
- ✓ Contract Law (Core)
- ✓ Contract Law 2 (Consumer and Commercial Law) (Core)
- ✓ Tort Law 2 (Intellectual Property and Media) (Core)
- ✓ International Human Rights (Core)

### YEAR THREE

- ✓ Property Law 1 (Land Law) (Core)
- ✓ Extended Essay in Law (Core)
- ✓ Property Law 2 (Equity and Trusts) (Core)
- ✓ Employment Law (Optional)
- ✓ Family Law (Optional)
- ✓ Company Law (Optional)
- ✓ Insurance Law (Optional)
- ✓ Law of International Trade (Optional)
- ✓ Sports and the Law (Optional)
- ✓ Medical Law (Optional)
- ✓ Jurisprudence (Optional)

### Progression Opportunities

Law is a field that offers exciting career prospects. Upon graduating, you can explore a range of job roles, which include:

- Solicitor
- Barrister
- Paralegal
- Advice worker
- Civil service administrator
- Compliance officer
- Legal executive

### Entry Requirements

Standard entry requirements:

- 48 UCAS points (or equivalent)
- GCSE Maths grade C/4 and English grade C/4
- IELTS score of 5.0 (no grade below 4.5)

#### Non-standard applicant requirements:

##### Access qualifications:

- 45 credits on your Access Course
- IELTS score of 5.0 (no grade below 4.5)

##### Alternative assessment:

For mature students (those over 21 years old), or those requiring an alternative kind of assessment:

- You must take part in an academic interview to demonstrate your non-academic achievements, such as work experience.
- IELTS score of 5.0 (no grade below 4.5)

### Course Specification

Duration:	4 years
Level:	RQF Level 3-6
Awarding Body:	St Mary's University
Assessment:	Course work and written exam plus Formative Assessment (FAS)
Timetable:	Weekdays / Evenings / Weekends
Intake dates:	September, January, April, June
Fee:	£9,250 per year (Home fee)

Delivered in partnership with:



St Mary's  
University  
Twickenham  
London



Regent  
College  
London

# LLB (HONS) LAW WITH BUSINESS

with Foundation Year



Our **4-year Law with Business degree, known as an LLB or Bachelor of Law**, is equivalent to a BA or BSc. This course is ideal for students interested in pursuing a career in law and wishing to understand its operation in a business environment.

A law degree is widely respected whether you want to become a solicitor, barrister, or in-house lawyer. As a qualifying law degree (QLD), this course is essential if you are considering a career as a solicitor or a barrister. The degree allows you to continue to move on to the next stage of training to enter the legal profession: The BPTC for barristers or the LPC/SQE for solicitors.

Regent's LLB Law with Business is perfect if you prefer to learn in smaller seminar groups with individual attention. An industry-leading faculty of expert tutors and academics from various disciplines across industry and academia teach our LLB.

The course offers flexible study options. All students can learn about Regent's unique Personal, Leadership and Growth programme: Thinking into Character. Designed to help you understand, manage, and lead yourself effectively to succeed in all areas of your professional career.

## Why should I study the LLB (Hons) Law with Business with Foundation Year?

An LLB Law with Business degree is an ideal programme for students who wish to enter a diverse range of professions outside of legal work. Such as jobs in the City, civil service, criminal justice/social/probation services, the charitable sector, or the world of business.

If you have a passion for law and want to challenge injustice, this is the degree for you. Once you have graduated, you will

have opportunities to explore different job roles within the law field and its surrounding specialities.

## Modules

### FOUNDATION YEAR

- ✓ Personal Learning Competencies (Core)
- ✓ Taking a Professional Approach (Core)
- ✓ Rights and Responsibilities I (Core)
- ✓ Rights and Responsibilities II (Core)
- ✓ Thinking Critically, Creatively and Ethically (Core)
- ✓ Individual Study (Core)
- ✓ Thinking into Character (Core)

### YEAR ONE

- ✓ English Legal System (Core)
- ✓ Criminal Law (Core)
- ✓ Public Law (Core)
- ✓ Public Law 2 (Human Rights) (Core)
- ✓ Financial Management (Optional)
- ✓ Criminal Law 2 (International Criminal Law) (Optional)
- ✓ Managing People (Optional)
- ✓ Practical Legal Skills (Optional)

### YEAR TWO

- ✓ Tort Law (Core)
- ✓ Contract Law (Core)
- ✓ EU Law (Core)
- ✓ Tort Law 2 (Intellectual Property and Media Law) (Core)
- ✓ Contract Law 2 (Consumer and Commercial Law) (Core)
- ✓ Management Accounting (Optional)
- ✓ Research Methods in Business and Management (Optional)
- ✓ Corporate Finance (Optional)

# LLB (HONS) LAW WITH BUSINESS

## with Foundation Year



### YEAR THREE

- ✓ Property Law 1 (Land Law) (Core)
- ✓ Extended Essay in Law (Core)
- ✓ Employment Law (Core)
- ✓ Property Law 2 (Equity and Trusts) (Core)
- ✓ Company Law (Core)
- ✓ Insurance Law (Core)
- ✓ Law of International Trade (Optional)
- ✓ Sports and the Law (Optional)
- ✓ Medical Law (Optional)
- ✓ Jurisprudence (Optional)

### Progression Opportunities

You can expect to develop transferable skills across fact management, decision-making, research, and creating and maintaining a winning line of argument, with the ability to apply these skills in various legal and non-legal settings.

### Becoming a Solicitor

Since September 2021, anyone who has not started a QLD can now qualify as a solicitor through the Solicitor's Qualification Exam route (SQE).

The candidate must:

- Complete both stages of assessment, SQE1 and SQE2
- Complete a degree-level qualification or equivalent
- Complete two years of qualifying work experience (QWE)
- Satisfy the SRA's character and suitability requirements

### Becoming a Barrister

Our LLB Law degrees are 'Qualifying Law Degrees' (QLD) and are recognised by the Bar Standards Board. Completing one of these degrees will satisfy the academic requirements for admission to the Bar. However, you will still need to pass an aptitude test and embark on (and pass) the Bar Professional Training Course (BPTC). You will also be required to undertake pupillage.

LLB law and business graduates have also gone on to become:

- Lawyer
- Diplomatic service officer
- Forensic accountant
- Human resources officer
- Local government officer
- Marketing Executive

- Newspaper journalist
- Public relations officer
- Stockbroker

### Entry Requirements

Standard entry requirements:

- 48 UCAS points (or equivalent)
- GCSE Maths grade C/4 and English grade C/4
- IELTS score of 5.0 (no grade below 4.5)

**Non-standard applicant requirements:**

**Access qualifications:**

- 45 credits on your Access Course
- IELTS score of 5.0 (no grade below 4.5)

### Alternative assessment

For mature students (those over 21 years old), or those requiring an alternative kind of assessment:

You must take part in an academic interview to demonstrate your non-academic achievements, such as work experience.

IELTS score of 5.0 (no grade below 4.5)

### Course Specifications

Duration:	4 years
Level:	RQF Level 3-6
Awarding Body:	St Mary's University
Assessment:	Course work and written exam plus Formative Assessment (FAS)
Timetable:	Weekdays / Evenings / Weekends
Intake dates:	September, January, April, June
Fee:	£9,250 per year (Home fee)

Delivered in partnership with:



St Mary's  
University  
Twickenham  
London



# LLB (HONS) LAW

## Bachelor's Degree

This **LLB (Hons) Law** course will provide you with a qualifying Law degree (QLD), and the fundamental knowledge that will allow you to excel in many possible careers in the field of law, including being a practicing lawyer in England and Wales. Delivered by a range of expert tutors and academics, our LLB (Hons) Law course will give you the analytical and transferable skills that are highly sought after by employers, therefore enhancing your employability and value in the workplace.

This course offers many flexible study options, meaning you can choose which style of learning suits your lifestyle better, whether that's at weekends, evenings, or during the daytime. Unlike many other Law degrees, this course is taught in small group sizes, giving you the individual attention and support needed for success. Alongside the course, we are pleased to offer all of our students the chance to learn about RCL's unique Personal, Leadership, and Growth programme called Thinking Into Character, which is designed to teach you how to manage and lead yourself effectively in order to be successful in all aspects of your personal and professional life.

*\*subject to validation*

### Why should I study the LLB (Hons) Law?

LLB Law degree is an ideal programme for students who wish to enter a diverse range of professions outside of the legal profession, such as jobs in the City, civil service, criminal justice/social/probation services, the charitable sector or Business world. A Law degree will equip you with the skills required to think critically, construct arguments, and process large amounts of data.

If you want to challenge injustice or make a difference in your professional life, then this is the ideal degree

programme. Once you have graduated, you will have opportunities to explore different job roles within the field of law, and its surrounding specialities.

### Modules

#### YEAR 1

- ✓ English Legal System and Foundation Legal Skills (Core)
- ✓ Criminal Law (Core)
- ✓ Public Law (Core)
- ✓ Equity and Trusts (Core)
- ✓ Contract Law (Core)
- ✓ Professionals in Practice (Core)

#### YEAR 2

- ✓ Tort Law 1 (Core)
- ✓ Land Law (Core)
- ✓ EU law (Core)
- ✓ Legal Skills (Core)
- ✓ Preparation for Practice (Core)
- ✓ Professional standards and the commercial environment (Core)

#### YEAR 3

- ✓ Company Law (Optional)
- ✓ Dissertation (Core) (all others are options, students choose 4)
- ✓ Employment Law
- ✓ Family law
- ✓ Company law
- ✓ Intellectual property law
- ✓ Jurisprudence
- ✓ Advanced legal practice
- ✓ International human rights law
- ✓ Sports law
- ✓ Medical law and ethics
- ✓ Professional standards and the commercial environment

*Please note: it is possible that a module listed on the website will not be able to run due to reasons beyond our control.*

# LLB (HONS) LAW

## Bachelor's Degree

### Progression Opportunities

A degree in Law is designed for students who have an interest in Law, whether they wish to become a:

- ✓ Solicitor
- ✓ Barrister
- ✓ In-house lawyer

LLB Law degree is also an ideal programme for students who wish to enter a diverse range of professions outside of just the legal profession, such as jobs in the

- ✓ Civil service
- ✓ Criminal justice/social/probation services
- ✓ The charitable sector
- ✓ Business world

### Entry Requirements

- IELTS 6.0 with no less than 5.5 in any band (or equivalent)
- UCAS Tariff 104

### Course Specification

Duration:	3 years
Level:	RQF Level 4-6
Awarding Body:	University of Bolton
Assessment:	Course work and written work plus Formative Assessment (FAS)
Timetable:	Week Days / Evenings / Weekends
Intake dates:	September, January, April, June
Fee:	£9,250 per year (Home fee) £13,550 per year (Overseas fee)

Delivered in partnership with:



London Academic Centre

The Regent College London Campus:

# Our locations

FOLLOW US ON



@RegentCollegeHE



school/regent-college-london

## LONDON

Regent Hill House, 153 Great Titchfield Street,  
Fitzrovia, London, W1W 5BD

2-10 Princeton Street, London,  
WC1R 4BH

## HARROW

Regent House, 167, Imperial Drive,  
Harrow, Middlesex, HA2 7HD

## KINGSBURY

Masons House, 1-3 Valley Drive,  
London, NW9 9NG

## WEMBLEY

Madison House, 24-28 London Road,  
Wembley, Middlesex, HA9 7EX

## SOUTHALL

Bishops House, 39-47 High Street,  
Southall, London, UB1 3HF

+44 (0)20 3870 6666

info@rcl.ac.uk

www.rcl.ac.uk

Regent College London aims to provide current information for our prospectus and website at all times however, it may occasionally be unable to run an advertised course for reasons of operational viability and student experience. In the event that a course is unable to run, or is only available at a different location, we will advise applicants and enrolled students at the earliest possible opportunity in writing. Applicants and students will, wherever feasible, be offered an alternative course or location of study.



## VALIDATION PARTNERS

